

Project Number: SQAW08-002

**SQUAW VALLEY PUBLIC SERVICE DISTRICT  
2007 CAPACITY AND RELIABILITY STUDY UPDATE**

Prepared for:

Squaw Valley Public Service District  
P.O. Box 2026  
Olympic Valley, California 96146-2026

February 2008

Prepared by:

ECO:LOGIC Engineering, LLC  
10381 Double R Blvd.  
Reno, Nevada 89521  
Telephone: 775-827-2311  
Fax: 775-827-2316

**SQUAW VALLEY PUBLIC SERVICE DISTRICT****2007 CAPACITY AND RELIABILITY STUDY UPDATE****SUBJECT:** 2007 Capacity and Reliability Study Update**PREPARED BY:** David Hunt, P.E.  
Ken Angst, P.E.  
Ben Jesch, E.I.**DATE:** February 11, 2008

---

**1. SUMMARY**

This technical memorandum provides an overview of Squaw Valley Public Service District's (District) 2007 water use data and examines trends in total water consumption and per capita demand factors. These trends were used to determine the District's ability to meet future water demands.

The Groundwater Management Support Activities Groundwater Characterization Report, May 12, 2005 (Groundwater Management Report), prepared by West Yost and Associates, estimated the maximum annual pumping capacity for the District's and the Mutual Water Company's (Mutual) vertical wells within the existing well field at 605 acre-feet annually. The estimated 605 acre-feet of available pumping is for the District's Wells 1R, 2, 3, and 5R, and the Mutual's Wells 1 and 2. This does not include the District's and Mutual's horizontal wells.

The District's average annual production from 1998-2007 was approximately 139,930,570 gallons, or 429.4 acre-feet annually. Producing an average of 31.8 acre-feet annually from the horizontal well, the District has then pumped an average of 397.6 acre-feet annually from Wells 1R, 2, 3 and 5R.

A review of the Mutual's pumping from 1998-2007 reveals an average annual pumping quantity of 49,124,169 gallons, or 150.8 acre-feet annually (John Collins). The Mutual has averaged a production rate of 43.5 acre-feet from their horizontal well and average of 107.3 acre-feet annually from Wells 1 and 2 over this period of time.

Collectively, the District and Mutual have pumped an average of 504.9 acre-feet annually from the main well field. Based on the 605 acre-feet available from the Groundwater Management Report, there is an additional 100.1 acre-feet annually of pumping capacity from the main well field available for future demands.

Currently, there are 84 vacant buildable residential lots within the Valley (Aleta Drake). This includes 69 lots within the District's service area and 15 within the Mutual's service

area. It is estimated that each of these will use approximately 0.91 acre-feet annually based on a 750 gallon per day per lot water demand factor plus 8.5% unaccounted for water. The remaining 15 Mutual lots will use an additional 13.7 acre-feet annually. The District also has current water supply commitments for approved development for the Red Wolf Lodge (6 master metered residential units) and Blythe Arena (3 commercial equivalent dwelling units). Based on the demand factors presented in Table 4, the demands for the Red Wolf and Blythe developments total 1.62 acre-feet annually. Finally, the Intrawest Phase 1 and 2 development has an estimated buildout demand of 18.5 million gallons annually. In 2007, Intrawest development used approximately 11.6 million gallons. The additional 6.9 million gallons annually to reach the estimated buildout demand amounts to 21.2 acre-feet annually. The summation of these commitments (Mutual's vacant residential lots, the District's approved commitments, and the remaining demands for Intrawest) leaves approximately 63.6 acre-feet annually of supply from the main well field for future demands.

With respect to maximum day demands, the District has a resolution stating, "The District shall operate its water system so as to be able to meet the annual maximum day demand (MDD) with the largest well out of service." This being the case, with Well #1 (420 gpm) out of service, the available pumping capacity with the remaining wells is 895 gallons per minute (gpm). With Well #2 pumping at reduced capacity of 200 gpm due to aquifer water levels and Well #1 out of service, the available pumping capacity to meet MDD is 780 gpm. The MDD over the previous four years has ranged between 546-579 gpm. The remaining MDD capacity is approximately 200 gpm.

## 2. DISCUSSION OF 2006-2007 WATER USE DATA

Residential and commercial water use data was provided to ECO:LOGIC by the District (Aleta Drake). The total annual metered water usage for 2007 was 126,179,725 gallons. Table 1 provides a summary of this data.

**Table 1. Total Annual Metered Water Usage**

	<b>Commercial</b>	<b>Residential</b>	<b>Total</b>
2001	70,080,429	54,756,004	124,836,433
2002	73,512,742	50,591,607	124,104,349
2003	76,828,955	52,579,687	129,408,642
2004	76,678,282	52,180,529	128,858,811
2005	53,891,936	71,991,595	125,883,531
2006	41,115,042	86,237,080	127,352,122
2007	39,921,246	86,258,479	126,179,725

Beginning in 2005, a number of condominiums previously categorized as commercial were changed to residential designation. Also, all of the hotel-motel classifications were moved to residential designation. As a result, the annual trends for each category changed; however, the total water usage by the District can still be compared. Overall the consumption for 2007 decreased from 2006 by about 1.2 million gallons.

## **Intrawest Water Usage**

Intrawest 22 Station came online in 2004; both First Ascent and 22 Station are now fully online. The District has designated 87.5% of the total metered water as residential condominium usage and the remaining 12.5% as commercial. The estimated buildout demands for the Intrawest facilities, Phase 1 and 2 only, is approximately 18.5 million gallons annually. In 2007 the Intrawest facilities used approximately 11.6 million gallons of water. The remaining water allotted to Intrawest based on previously estimated demands is 6.9 million gallons. For the purpose of estimating water demands into the future, it is assumed that Intrawest will use progressively more water annually due to increased occupancy, reaching 18.5 million gallons by 2013. However, it is possible that these facilities may never reach the final buildout estimates.

### **3. WATER LOSS**

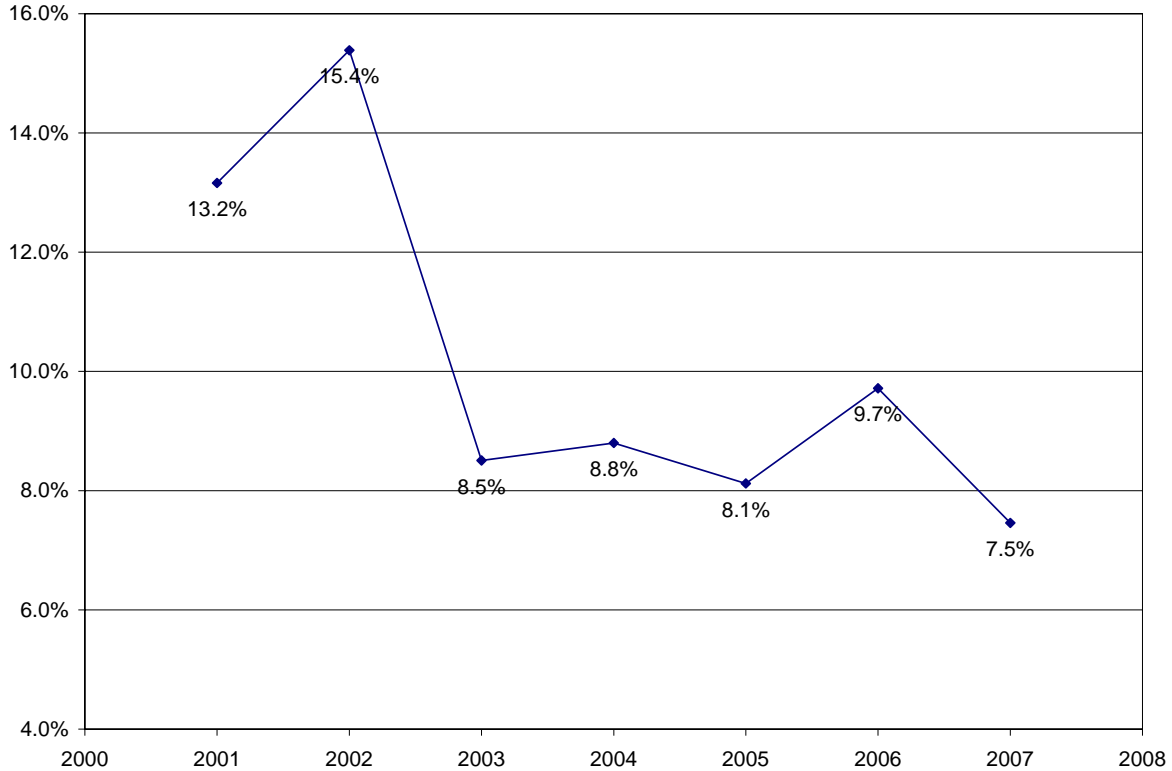
The District has undertaken diligent operation and maintenance efforts aimed at reducing unaccounted-for water losses in the system. The approach includes better leak detection and monthly water audits to detect loss increases earlier. These efforts appear to be further reducing annual and maximum day production requirements. The unaccounted-for water dropped significantly in 2007 to its lowest level since the District started keeping track in 2001. Table 2 provides an estimate of unaccounted-for water; the difference between the metered usage and the actual production from the wells.

**Table 2. Unaccounted-for Water (Gallons)**

Year	Metered	Production	Unaccounted	%
2001	124,836,433	143,753,400	18,916,967	13.2%
2002	124,104,349	146,676,600	22,572,251	15.4%
2003	129,408,642	141,441,900	12,033,258	8.5%
2004	128,858,811	141,291,100	12,432,289	8.8%
2005	125,883,531	137,009,964	11,126,434	8.1%
2006	127,352,122	141,058,596	13,706,474	9.7%
2007	126,179,725	136,350,441	10,170,716	7.5%

Figure 1 shows a leveling trend in water loss percentage since 2003, after declining from a peak of 15.4% in 2002. Based on these results, an average of 8.5% unaccounted-for water was selected for the purpose of estimating future water demands.

**Figure 1. Water Loss Percentage**



#### **4. ESTIMATED BUILD-OUT DEMAND FACTORS**

ECO:LOGIC used the residential metered water data for 2007 to calculate the average day demand (ADD) and maximum day demand (MDD) factors. The data is summarized in Appendix A.

##### **Average Day Demand Factors**

Past studies have used an ADD factor of 750 gpd/lot for new single family residential development for estimating future water demands. This demand factor represented approximately the top 10% of users, which have been assumed to represent the increasing water use trend in the Valley. In 2007 there were 24 users that exceeded an annual demand factor of 750 gpd/lot, as shown in Table A-1 of Appendix A (ranging up to 1,657 gpd/lot for the highest user). The number of users exceeding this benchmark has been continually decreasing, down from 33 in 2006 and 39 when established in

2005. These 24 users now represent approximately 8.0% of the District's current residential connections and consumed approximately 8,800,000 gallons, or 25.25% of the total residential metered water. In accordance with the assumptions made in the 2002 Capacity Study, an ADD factor of 750 gpd/lot for new single-family residential development will continue to be used for estimating future water demands.

**Maximum Day Demand Factors**

Past studies have used an MDD factor of 2,625 gpd/lot to estimate MDD for new single-family residential development. In 2007, there were 22 users (approximately 7.3%) that exceeded a July MDD of 2,625 gpd/lot. This number dropped by 6 users from 2006 when there were 28 users that exceeded this amount. To be consistent with past reports a MDD of 2,625 gpd/lot will be used again in this study to estimate new single-family residential development.

**5. ESTIMATED ANNUAL SUPPLY AND DEMANDS**

**Supply**

The Groundwater Management Report estimated the maximum annual pumping capacity in the main well field for pumping both the District's and the Mutual's wells at 605 acre-feet annually. The 605 acre-feet of available pumping is for the District's Wells 1R, 2, 3, and 5R, and the Mutual's Wells 1 and 2. This does not include the District's and Mutual's horizontal wells. Table 3 provides the average annual production from the horizontal wells.

**Table 3. Horizontal Well Annual Production**

Production Site	Time Period	Average Annual Production	
		Gallons	Acre-feet
SVPSD Horizontal Well	1998-2007	10,348,706.5	31.8
Mutual Horizontal Well	1998-2007	14,175,847.9	43.5

The District's average annual production from 1998-2007 was 139,930,570 gallons, or 429.4 acre-feet annually. Producing an average of 31.8 acre-feet annually from the horizontal well, the District has pumped an average of 397.6 acre-feet annually from Wells 1R, 2, 3 and 5R.

A review of the Mutual's pumping data from 1998-2007 reveals an average annual pumping quantity of 49,124,169 gallons, or 150.8 acre-feet annually (John Collins). Taking into account the horizontal well production, the Mutual has pumped an average of 107.3 acre-feet annually from Wells 1 and 2.

Based on the above discussion, of the 605 acre-feet available pursuant to the Groundwater Management Report, the District and Mutual combined have pumped approximately 504.9 acre-feet annually from the main well field. Therefore there is remaining 100.1 acre-feet annually of pumping capacity from the main well field available for future demands.

## Demands

There are currently 84 vacant buildable residential lots in the Valley (Aleta Drake). This includes 69 lots within the District's service area and 15 within the Mutual's service area. It is estimated that each new residential connection will use approximately 0.91 acre-feet annually based on a 750 gallon per day per lot average annual water demand factor plus 8.5% unaccounted for water. The remaining 15 Mutual lots will use an additional 13.7 acre-feet annually. The District also has current water supply commitments for approved development at the Red Wolf Lodge (6 master metered residential units) and Blythe Arena (3 commercial equivalent dwelling units). Based on the demand factors presented in Table 4, the demands for the Red Wolf and Blythe developments total 1.62 acre-feet annually. Finally, the Intrawest Phase 1 and 2 development has an estimated buildout demand of 18.5 million gallons annually. Intrawest used an average of 11.6 million gallons annually in 2007.

Taking into account the Mutual's vacant lots, the District's approved commitments, and the remaining demands for Intrawest, this leaves an additional 63.6 acre-feet annually of supply from the main well field for future demands.

For estimating annual growth rates for the District's 69 remaining buildable residential development and the Red Wolf Lodge and Blythe Arena commitments, the following criteria were used:

- Growth rate of 10 homes/year for new residential construction
- Growth rate of 5 homes/year for remodel
- Growth in irrigation demands of 5 units/year
- Demands for Red Wolf and Blythe added in year 2008 (Aleta Drake)

The residential construction rate was estimated at 10 homes/year in the 2004 Study. In recent years fewer than 10 new homes have been built each year, including eight in 2007. However, the projected rate will remain the same as a conservative estimate. Although this is a conservative estimate, its purpose is to show how many new homes, remodels, and irrigation connections can be served with the remaining capacity of 63.6 acre-feet annually based on the demand factors indicated in Table 4.

As discussed previously, Intrawest has used only a fraction of its estimated buildout demand of 18.5 million gallons annually (Phases 1 and 2 only). This leaves an additional 6.9 million gallons of demand, which for the purpose of this analysis, has been divided equally over the next 5 years, adding an additional 1,380,000 gallons annually between 2008 and 2013. Table 4 shows the estimated annual water-use increases through 2013.

Table 5 provides the refined estimated annual metered demands and pumping demands in gallons per year and acre-feet per year for the years 2008-2013. The total acre-feet pumped is an indication of estimated metered demands plus 8.5% for unaccounted-for production water.

**Table 4. Estimated Annual Demand Increase for Development Already Committed by the District**

Customer Category	New Units To Be Developed	Average Day Demand Factor, gpd/unit	Estimated Annual Demand Increase (b)					
			2008	2009	2010	2011	2012	2013
<b>Single Family Residential - SVPSD</b>								
New Construction	69	750	2,737,500	2,737,500	2,737,500	2,737,500	2,737,500	2,737,500
Remodels (a)	105	350	638,750	638,750	638,750	638,750	638,750	638,750
<b>Condo Units Separately Metered</b>	0	180	0	0	0	0	0	0
<b>Master Metered residential - Condo and Hotel Units</b>	6	140	306,600	0	0	0	0	0
<b>Commercial - Equivalent Dwelling Units</b>	3	207	226,665	0	0	0	0	0
<b>Irrigation - Equivalent Dwelling Units</b>	250	250	456,250	456,250	456,250	456,250	456,250	456,250
<b>Intrawest (c)</b>			1,380,000	1,380,000	1,380,000	1,380,000	1,380,000	1,380,000
<b>Total Estimated Annual Water Demand Increase</b>			<b>5,745,765</b>	<b>5,212,500</b>	<b>5,212,500</b>	<b>5,212,500</b>	<b>5,212,500</b>	<b>5,212,500</b>

- (a) Existing homes have 400 gpd/unit demand factor based on the 1993 Water System Master Plan; applying the higher demand factor of 750 gpd/unit will result in a net increase of 350 gpd/unit on the overall annual demand
- (b) Demand projection based on 10 new SFR units/year and 5 remodels/year; 5 units/year irrigation increase
- (c) Intrawest using full estimated buildout demand of 18.5 million gallons annually by the year 2013

**Table 5. Estimated Annual Demands**

Year	Metered Usage, gallons (a)	Acre Feet	Estimated Pumping, gallons (b)	Total Acre Feet Pumped
2001	124,836,433	383	143,753,400	441
2002	124,104,349	381	146,676,600	450
2003	129,408,642	397	141,441,900	434
2004	128,858,811	395	141,291,100	434
2005	125,883,531	386	137,009,964	420
2006	127,352,122	391	141,058,596	433
2007	126,179,725	387	136,350,441	418
2008	131,925,490	405	143,165,542	439
2009	137,137,990	421	148,822,147	457
2010	142,350,490	437	154,478,752	474
2011	147,562,990	453	160,135,357	491
2012	152,775,490	469	165,791,962	509
2013	157,987,990	485	171,448,567	526

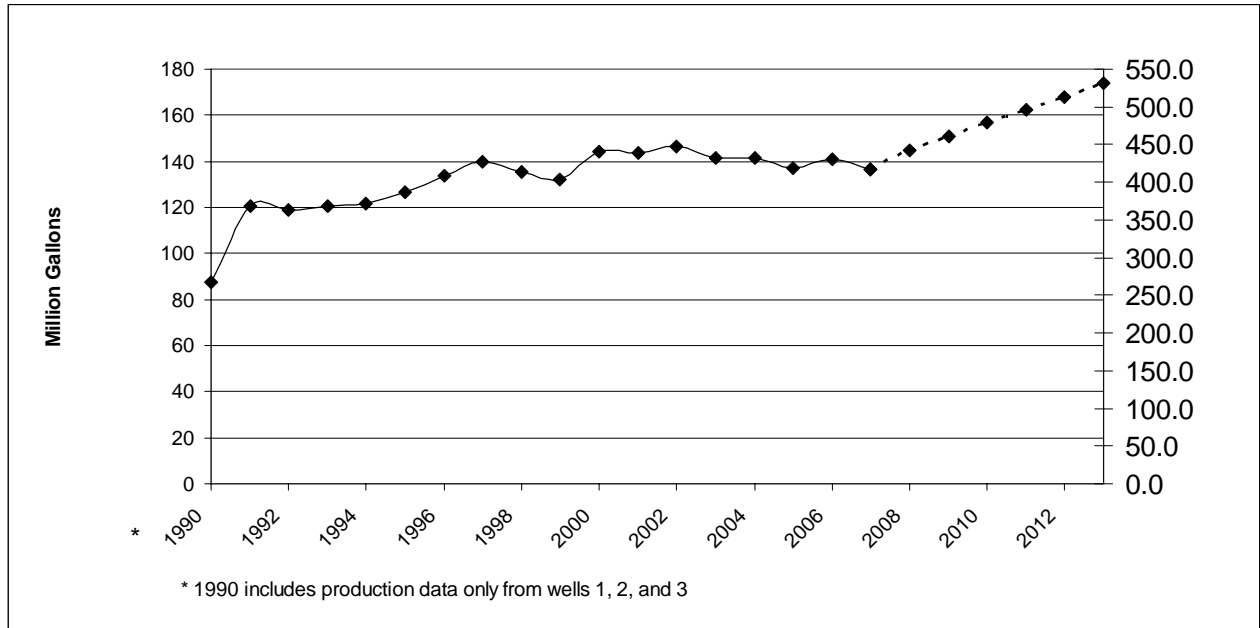
(a) For 2001-2007, this number represents the actual metered data. The remaining year estimates come from Table 4.

(b) For 2001-2007, this number represents the actual pumping data. For years 2008-2013, there is an 8.5% addition to the metered estimates for unaccounted for water.



Figure 2 illustrates the annual production from the District's wells from 1990 through 2006, along with the estimated demands for the years 2008 through 2013.

**Figure 2. Annual Production**



Based on the remaining 63.6 acre-feet annually available from the main well field, the District can pump up to 482 acre-feet annually from the main well field. This will allow the District to meet average annual demands through the year 2010.

**July and August Production Requirements**

July and August are historically the peak production and demand months within the Valley. Table 6 compares the District's production quantities for the years 2002-2007 to the Groundwater Management Report's maximum sustainable pumping rates for the months of July and August. The production total is the total amount of water produced by the District's main well field wells (1R, 2, 3, 5R) and the horizontal well. The horizontal well production column indicates the average July and August production rates from the horizontal well over the past 10 years. The well field production column indicates the amount of water produced from the main well field. The Groundwater Management Report indicates the available pumping for July is 64 acre-feet and for August, 65 acre-feet. All values in the table are in acre-feet.

**Table 6. Peak Month Production Demands**

	July			August			Maximum Sustainable Yield	
	Production Total	HZ Well Production	Well Field Production	Production Total	HZ Well Production	Well Field Production	July	August
2002	65	5	60	67	4	63	64	65
2003	64		59	60		56		
2004	61		56	62		58		
2005	63		58	61		57		
2006	67		62	62		58		
2007	69		64	62		58		

The District can meet the current maximum month demands based on the allowable pumping from the Groundwater Management Report. As demands increase in future years, the maximum monthly sustainable pumping rates indicated in the Groundwater Management Report may potentially be redistributed between months to allow for more production capacity in the summer months, without increasing the maximum annual pumping capacity.

Although the main well field has the water available, the limiting factor to redistributing water between months is the Well 2 screen depth. The most critical months with respect to the water level in the main well field are August and September (Derrick Williams). To pump more water from the main well field in the critical months, the District would have to move pumping around to make up for the lost capacity in Well 2. Groundwater recharge during the summer months occurs primarily due to return flow from water losses within the water and sewer facilities, and this is already built in to the aquifer model (Derrick Williams). The only other available recharge comes from summer rain events.

There may be other environmental factors that limit the redistribution of pumping quantities in the critical months, but the only constraint discussed in the Groundwater Management Report is the screen depth of the District's Well 2.

**Demand Factors**

The 2004 Study began attempting to verify the demand factors used for this estimate. This study presents the next iteration of metered data, by connection type. Table 7 presents the actual metered annual demands for the specified land use. In comparison to demand factors used in previous work (ECO:LOGIC 1999, West Yost 2001), the average usage for each category of land use is less than the values estimated.

**Table 7. Annual Demands by Connection Type**

	2003 ADD (gpd/EDU)	2004 ADD (gpd/EDU)	2005 ADD (gpd/EDU)	2006 ADD (gpd/EDU)	2007 ADD (gpd/EDU)	Avg. ADD (gpd/conn)	ECO:LOGIC 1999 Memo
<b>RESIDENTIAL</b>							
Single Family	344	345	303	313	318	325	400
SFR-Multi Unit	380	400	423	383	385	394	
Multi-Family Indv. Metered	55	55	59	55	59	57	180
Multi-Family Master Metered	62	74	96	110	106	90	140
<b>COMMERCIAL</b>							
Hotel/Motel	93	88	108	113	N/A (a)	100	140

(a) Beginning in 2007, Hotel/Motel units were reclassified as Multi-Family Master Metered facilities.

## 6. ESTIMATED MAXIMUM DAY DEMANDS

Table 8 presents past maximum day demands (MDD) and the date on which they occurred.

**Table 8. Maximum Day Demands**

Year	Date	Peak Day (MGal)	Peak Day (gpm)
1997		0.600	417
1998		0.625	434
1999	24-Jul	0.800	556
2000	19-Aug	0.875	608
2001	20-Jul	0.803	558
2002	8-Aug	0.943	655
2003	19-Jul	0.797	553
2004	6-Aug	0.813	565
2005	29-Jul	0.786	546
2006	26-Jul	0.834	579
2007	10-Aug	0.827	574

The 2007 MDD was 826,600 gallons (574 gpm) on August 10. This value is similar to that seen in 2006, representing less than 1% decrease from that year. While slightly less, it is still the second greatest MDD value seen since the anomalous spike in 2002. Though the data shows a leveling trend, this study will continue to predict conservatively that future development will drive up water use and the District will see increasing demands. Table 9 indicates the estimated maximum day demand annual increases through the year 2013. Based on these annual increase estimates, Table 10 provides the estimated MDDs through the year 2013.

**Table 9. Estimated Maximum Day Demand Increase for Development Already Committed by the District**

Customer Category	New Units To Be Developed	Average Day Demand Factor, gpd/unit	MDD Peaking Factor	MDD Factor, gpd/unit	Estimated Annual MDD Increase (b)						
					2008	2009	2010	2011	2012	2013	
<b>Single Family Residential - SVPSD</b>											
New Construction	69	750	3.5	2,625	26,250	26,250	26,250	26,250	26,250	26,250	26,250
Remodels (a)	105	350		1,625	8,125	8,125	8,125	8,125	8,125	8,125	8,125
<b>Condo Units Separately Metered</b>	0	180	2.5	450	0	0	0				
<b>Master Metered residential - Condo and Hotel Units</b>	6	140	2.5	350	2,100	0	0				
<b>Commercial - Equivalent Dwelling Units</b>	3	207	2.5	518	1,553	0	0				
<b>Irrigation - Equivalent Dwelling Units</b>	250	250	5.0	1,250	6,250	6,250	6,250	6,250	6,250	6,250	6,250
<b>Total Estimated Annual Water Demand Increase</b>					<b>44,278</b>	<b>40,625</b>	<b>40,625</b>	<b>40,625</b>	<b>40,625</b>	<b>40,625</b>	<b>40,625</b>

- (a) Existing homes have a ADD factor of 400 gpd/unit and a Peaking Factor of 2.5; for a MDD factor of 1000 gpd/unit, based on the 1993 Water System Master Plan. They will have a net increase of 1,625 gpd/unit (2,625-1,000) MDD since they will have the same demand factors as the new construction SFR units.
- (b) Demand projection based on 10 new SFR units/year and 5 remodels/year; 5 units/year irrigation increase

**Table 10. Estimated Maximum Day Demands**

Year	Metered (a)		Production (b)	
	MDD, gpd	MDD, gpm	MDD, gpd	MDD, gpm
1997	600,000	417	600,000	417
1998	625,000	434	625,000	434
1999	800,000	556	800,000	556
2000	875,000	608	875,000	608
2001	803,000	558	803,000	558
2002	943,000	655	943,000	655
2003	797,000	553	797,000	553
2004	813,000	565	813,000	565
2005	785,800	546	785,800	546
2006	833,900	579	833,900	579
2007	822,600	571	822,600	571
2008	866,878	602	940,735	653
2009	907,503	630	984,822	684
2010	948,128	658	1,028,908	715
2011	988,753	687	1,072,994	745
2012	1,029,378	715	1,117,080	776
2013	1,070,003	743	1,161,167	806

- (a) For 2001-2007, this number represents the actual metered data. The remaining year estimates come from Table 7.
- (b) For years 2008-2013, there is an 8.5% addition to the metered estimates for unaccounted for water.

## Well Capacity

The current pumping capacities of the District's existing wells are:

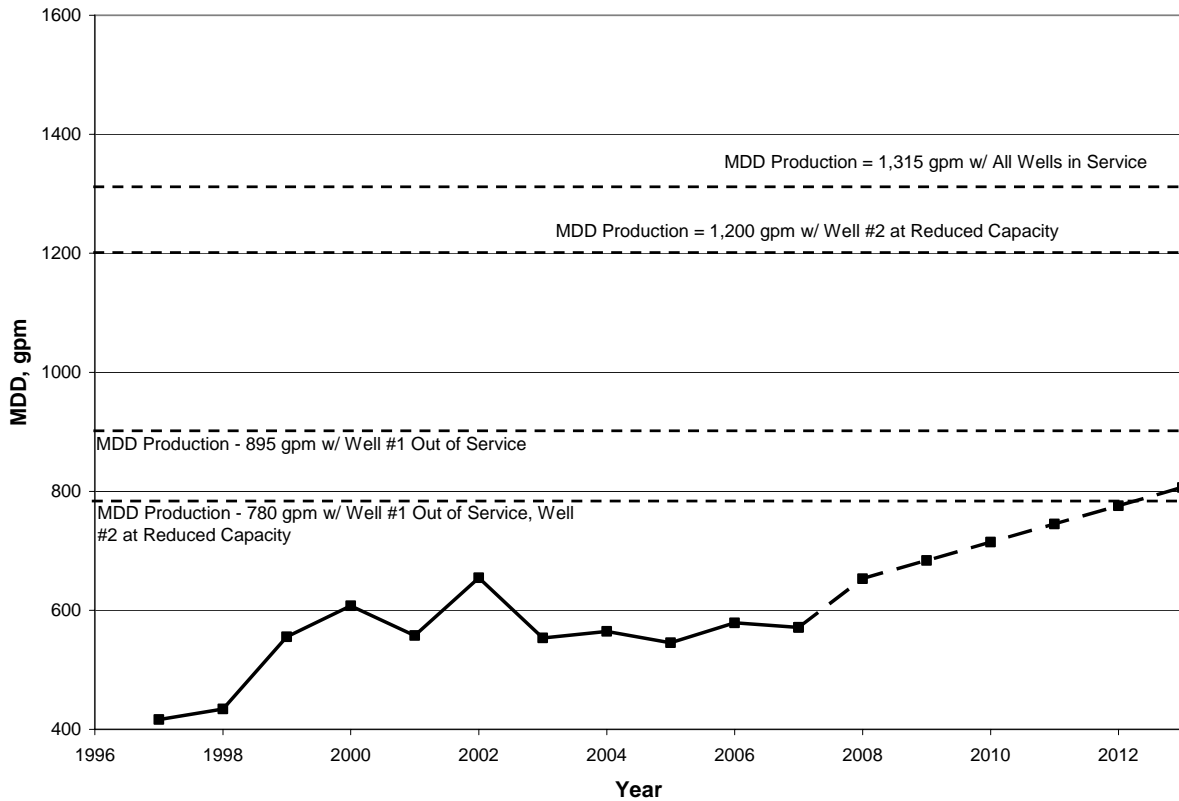
- Well #1R – 420 gpm
- Well #2 – 315 gpm (200 gpm reduced rate)
- Well #3 – 120 gpm
- Well #5R – 425 gpm
- Horizontal Well – 35 gpm

Replacement Well #1R was constructed in Spring 2005 and was equipped at 420 gpm. The District plans to construct Replacement Well #3 at its current capacity of 120 gpm, providing a total maximum day production of 1,315 gpm. This assumes that Well #2 can pump at its rated capacity which, according to the District's operations staff, is not the case in critically dry years. In critically dry years, the production from Well #2 must routinely be reduced to as low as 200 gpm during the summer months because water levels in the aquifer fall below critical levels (Jesse McGraw). This being the case, with Well #2 pumping at reduced capacity, the available pumping capacity is 1,200 gpm. With all wells in service, the District can meet the MDD past the year 2013.

However, the District currently has a resolution stating, "The District shall operate its water system so as to be able to meet the annual maximum day demand with the largest well out of service." This being the case, with Well #1 out of service, the available pumping capacity is 895 gpm. Once again, this assumes that Well #2 can pump at its rated capacity. With Well #2 pumping at reduced capacity and Well #1 out of service, the available pumping capacity is 780 gpm.

With Well #1 out of service, Well #2 pumping at a reduced capacity, and Well #3 pumping at 120 gpm (current pumping rate), the available pumping capacity is reduced to 780 gpm. Under this scenario, using current demand estimates, the pumping capacity does not satisfy the MDD in year 2013 using a new home construction rate of 10 homes per year. The estimated demand would be 806 gpm, which is 26 gpm above the MDD Production gpm. Figure 3 plots the estimated MDDs along with the pumping capacities of the various scenarios described above.

**Figure 3. Estimated MDD vs. Production**



**7. SUMMARY AND CONCLUSIONS**

The results of this capacity study update indicate that there is approximately 63.6 acre-feet annually of production capability remaining in the main well field available to meet the District’s future water demands. This is based on the average annual pumping for the Mutual and District of 494.4 acre-feet from the main well field . Also included in this number are the 15 vacant residential lots within the Mutual’s service territory, the Red Wolf Lodge and Blythe Arena developments, and the estimated buildout water demand for Intrawest Phase 1 and 2.

The metered usage for 2007 was approximately 126.2 million gallons, which is approximately 1.2 million gallons less than 2006. Overall, the annual demands over the past four years have flattened out. Despite consistently flat water use, it is predicted that development will eventually catch up with conservation efforts and the District will again see increasing demands as new development occurs.

Based on the remaining 63.6 acre-feet annually available from the main well field, the District can pump up to 482 acre-feet annually from the main well field. This will allow the District to meet average annual demands through the year 2010.

Based on estimated annual increases in MDD and the District’s current pumping capabilities, the District will not meet the MDD in the year 2013, with the largest

production well (Well #1) out of service and Well #2 pumping at a reduced capacity of 200 gpm (see Figure 3).

**APPENDIX A**  
Residential Metered Water Data  
2007



**Table A-1 - 2007 Metered Residential Water Usage: Average Annual Demands**

Customer #	Meter Size	Jan	Feb	Mar	Apr	May	June	July	Aug	Sept	Oct	Nov	Dec	Total	Annual Demand gpd/connection	July Demand (maximum month) gpd/connection	July MDD gpd
709	3/4"	1,834	11,355	12,407	3,036	64,648	120,781	127,528	138,676	101,221	21,648	736	1,101	604,971	1,657	4,114	5714
395	5/8"	104,748	16,352	942	24,576	35,647	47,006	68,426	69,428	135,503	18,955	21,407	24,971	567,961	1,556	2,207	3066
350	5/8"	1,917	8,248	4,508	25,458	55,066	71,892	99,031	107,643	117,434	23,474	3,917	5,457	524,045	1,436	3,195	4437
323	3/4"	37	801	46	698	64,975	91,096	78,693	139,037	76,105	23,438	1,074	3,661	479,661	1,314	2,538	3526
324	3/4"	286,342	227	2,459	348	312	542	1,950	67,682	43,498	5,682	59	1,797	410,898	1,126	63	87
739	1"	8,482	4,229	4,971	3,868	29,359	46,525	60,275	59,200	53,175	97,981	24,876	11,827	404,768	1,109	1,944	2701
755	3/4"	27	35	105	229	26,805	58,872	116,017	76,420	57,243	19,759	48	922	356,482	977	3,742	5198
1050	3/4"	2,441	1,997	333	3,485	32,669	83,810	117,946	71,527	34,033	430	1,916	3,311	353,898	970	3,805	5284
1082	3/4"	11,553	2,835	7,879	9,878	51,886	58,562	85,686	65,599	32,779	5,508	4,498	4,244	340,907	934	2,764	3839
750	3/4"	6,238	5,337	12,147	5,417	42,786	64,758	76,914	58,256	51,997	4,802	5,012	6,531	340,195	932	2,481	3446
888	1"	18	4,938	6	2,297	49,986	51,280	70,607	100,466	50,719	2,804	111	1,650	334,882	917	2,278	3163
402	5/8"	2,486	2,623	1,557	950	9,642	44,637	91,509	136,108	28,605	10,734	3,861	1,023	333,735	914	2,952	4100
332	3/4"	0	1,316	47	1,181	37,510	67,196	66,697	92,986	57,500	6,198	317	0	330,948	907	2,152	2988
1086	3/4"	34,316	2,734	1,916	6,711	38,109	53,550	103,781	46,780	38,922	1,648	1,668	449	330,584	906	3,348	4650
749	3/4"	7,760	6,547	5,609	1,853	16,577	72,681	86,566	66,379	49,171	8,790	604	3,518	326,055	893	2,792	3878
742	3/4"	1,976	677	3,163	5	25,316	60,086	75,415	72,202	64,223	18,996	556	1,556	324,171	888	2,433	3379
862	3/4"	4,831	2,739	0	439	41,688	57,632	52,789	78,483	49,780	18,002	0	3,383	309,766	849	1,703	2365
756	3/4"	795	449	695	1,432	31,329	41,514	55,202	84,166	68,436	22,498	150	2,963	309,629	848	1,781	2473
887	3/4"	21,646	17,959	18,946	23,011	23,836	37,184	42,254	39,450	59,693	9,606	5,890	9,750	309,225	847	1,363	1893
927	3/4"	3,319	3,221	2,632	38,830	102,465	62,914	30,902	28,130	26,647	4,342	1,377	2,867	307,646	843	997	1385
852	3/4"	13,292	11,275	11,948	10,844	42,351	43,919	43,800	57,539	39,956	12,025	9,939	8,156	305,044	836	1,413	1962
708	1"	23	772	3,713	640	25,704	57,352	71,984	60,786	56,993	20,552	3,074	935	302,528	829	2,322	3225
375	3/4"	21,087	16,615	11,595	14,020	8,356	28,007	37,767	94,101	22,181	9,058	11,120	13,551	287,458	788	1,218	1692
459	3/4"	7,267		7,364	31,383	61,211	36,701	68,936	47,223	8,699	8,504	8,924		286,212	784	1,184	1644
740	3/4"	7,100	4,988	4,586	2,377	27,995	48,509	76,074	48,729	38,862	7,442	4,576	1,478	272,716	747	2,454	3408
725	3/4"	107,450	10,596	1,954	521	8,239	17,582	25,353	58,498	28,367	7,703	2	4,381	270,646	741	818	1136
871	1"	39	5,188	8,305	7,307	34,605	61,948	63,045	46,782	28,540	7,957	148	4,975	268,839	737	2,034	2825
485	3/4"	10,447	5,469	5,110	2,179	19,377	26,515	29,962	69,801	32,463	4,217	859	54,965	261,364	716	967	1342
1077	3/4"	4	0		621	17,414	30,822	79,683	81,945	39,101	10,886	122	0	260,598	714	2,570	3570
1123	3/4"	895	157	256	79	15,625	56,333	59,704	58,232	37,678	10,990	5,465	13,939	259,353	711	1,926	2675
1060	1"	6,045	5,514	7,194	6,967	24,113	32,283	41,221	81,093	34,718	11,259	1,513	6,098	258,018	707	1,330	1847
828	3/4"	6,655	6,888	5,470	6,582	45,901	50,325	49,179	41,888	27,461	5,073	5,472	6,659	257,553	706	1,586	2203
764	5/8"	1,346	262	1,486	20,828	40,424	52,223	34,760	35,647	33,563	27,939	8,283	454	257,215	705	1,121	1557
1061	3/4"	5,472	4,619	4,707	4,452	23,179	48,157	42,226	66,617	37,576	4,036	3,256	7,041	251,338	689	1,362	1892
401	5/8"	1,535	776	153	342	2,602	46,223	123,158	41,120	21,550	6,470	609	263	244,801	671	3,973	5518
761	5/8"	3,012	3,720	2,629	1,174	31,684	42,351	51,242	60,576	26,736	16,939	792	1,644	242,499	664	1,653	2296
460	5/8"	7,822	5,104	5,230	6,532	33,785	43,009	29,773	67,102	23,676	4,645	4,303	8,294	239,275	656	960	1334
744	3/4"	4,926	3,362	1,795	3,717	24,315	30,136	61,416	44,664	45,033	11,754	933	6,259	238,310	653	1,981	2752
880	1"	2,103	1,638	3,935	0	52,178	40,770	24,226	64,348	36,184	9,862	395	1,676	237,315	650	781	1085
752	3/4"	3,978	3,204	4,079	4,916	16,595	57,941	43,074	56,202	36,075	1,104	2,676	6,855	236,699	648	1,389	1930
866	3/4"	1,841	66,093	39,333	9	15,877	20,307	17,628	39,079	27,000	596	98	4,718	232,579	637	569	790
827	3/4"	1,785	499	1,425	0	30,551	37,381	50,275	75,572	31,596	211	1,166	1,160	231,621	635	1,622	2252
386	5/8"	5,856	3,775	4,205	5,783	30,790	40,886	42,687	57,010	25,801	4,100	4,857	5,558	231,308	634	1,377	1913
881	1"	not read	15,162	378	580	21,382	38,367	36,191	55,385	40,582	9,051	1,847	5,866	224,791	616	1,167	1621
863	1"	168	9,949	113	23,410	7,637	35,981	46,284	40,065	36,842	17,567	2,911	194	221,121	606	1,493	2074
855	1"	14,545	12,636	11,897	4,191	10,646	27,733	35,595	54,655	20,983	4,408	7,046	10,686	215,021	589	1,148	1595
387	5/8"	7,508	5,788	10,886	10,535	27,504	36,823	41,991	39,807	9,562	7,539	8,113	7,239	213,295	584	1,355	1881
371	5/8"	7,677	8,455	6,507	8,225	24,244	31,389	36,116	52,557	20,045	4,669	4,553	6,090	210,527	577	1,165	1618
758	3/4"	3,055	2,650	346	1,663	2,657	34,983	46,854	54,510	49,807	9,889	1,737	186	208,337	571	1,511	2099
468	5/8"	4,406	2,372	2,064	5,897	30,437	32,509	33,592	55,770	21,763	4,454	3,243	9,692	206,199	565	1,084	1505
938	3/4"	106	496	6	199	20,650	54,267	54,267	55,370	11,021	3,128	1,455	343	201,308	552	1,751	2431
365	5/8"	2,781	2,811	2,948	4,445	14,373	11,390	27,143		17,560	41,526	39,363	33,649	197,989	542	876	1216
414	5/8"	3,418	2,881	3,200	6,156	38,911	23,760	25,628	71,629	8,372	5,639	2,844	3,379	195,817	536	827	1148
372	5/8"	6,089	5,360	3,795	2,979	12,636	26,474	39,120	51,696	29,459	8,263	3,218	5,594	194,683	533	1,262	1753
487	5/8"	11,331	9,585	4,856	9,916	10,624	51,316	11,238	40,780	22,693	6,036	6,625	4,656	189,656	520	363	503
1120	1"	1,561	4,254	3,414	16,241	15,089	27,968	42,724	30,744	32,004	3,620	5,267	6,449	189,335	519	1,378	1914
1142	3/4"	58	883	446	11,009	25,975	33,830	34,596	41,354	34,489	4,483	132	195	187,450	514	1,116	1550
458	5/8"	2,659	1,799	1,032	536	350	16	38,134	97,950	40,351	2,128	334	1,249	186,538	511	1,230	1709
726	3/4"	7,080	4,781	5,659	6,612	22,468	33,852	20,367	45,445	24,902	4,695	4,485	5,674	186,020	510	657	913
325	3/4"	4,504	3,011	1,809	1,671	8,290	48,858	643	46,205	32,441	29,998	1,607	3,049	182,086	499	21	29
440	5/8"	1,780	1,218	1,059	539	26,840	33,209	31,180	41,462	38,828	3,004	90	2,654	181,863	498	1,006	1397
920	3/4"	5,138	7,710	2,959	986	6,487	18,484	16,998	61,489	42,540	16,224	63	1,490	180,568	495	548	762



Customer #	Meter Size	Jan	Feb	Mar	Apr	May	June	July	Aug	Sept	Oct	Nov	Dec	Total	Annual Demand gpd/connection	July Demand (maximum month) gpd/connection	July MDD gpd
483	5/8"	12,907	9,405	7,789	6,344	6,048	6,069	6,397	18,170	12,756	9,443	10,109	9,727	115,164	316	206	287
374	5/8"	2,659	2,312	373	1,630	10,414	12,534	16,314	34,540	13,833	8,125	8,643	3,124	114,501	314	526	731
1056	5/8"	3,875	3,811	1,365	57	16,654	5,415	19,788	29,289	22,933	6,783	1,076	2,952	113,998	312	638	887
765	3/4"	426	399	517	2,569	7,556	9,540	28,268	29,499	24,731	8,311	127	75	112,018	307	912	1266
413	5/8"	5,201	4,275	3,941	4,810	5,147	6,020	6,862	42,875	17,315	5,267	4,034	6,006	111,753	306	221	307
8	3/4"	3,624	2,671	4,174	3,491	10,884	16,936	19,914	23,709	13,365	3,659	2,995	4,189	109,611	300	642	892
438-001	5/8"	1,954	547	925	2,555	38,725	21,354	10,497	20,880	589	3,418	3,651	3,940	109,035	299	339	470
10	5/8"	4,833	3,364	2,355	7,955	14,191	15,323	11,247	14,386	16,204	3,243	7,865	7,522	108,488	297	363	504
456	3/4"	3,735	2,626	1,837	2,559	11,420	16,027	10,848	25,182	17,970	8,815	1,721	3,518	106,258	291	350	486
475	5/8"	0	1,730	931	54	35	10,658	19,516	28,027	36,161	5,585	1,407	1,864	105,968	290	630	874
872	3/4"	913	2	197	127	6,425	20,711	24,401	26,649	19,305	3,176	200	2,152	104,258	286	787	1093
2	5/8"	3,706	1,179	25,989	209	2,512	23,046	12,259	16,189	11,102	2,771	1,086	3,228	103,276	283	395	549
474	5/8"	8,038	6,246	6,350	6,209	6,292	11,735	10,057	20,000	9,078	5,221	6,372	6,472	102,070	280	324	451
358	5/8"	3,458	4,633	3,184	4,199	4,738	6,524	9,007	17,330	18,148	17,823	5,728	4,358	99,130	272	291	404
455	5/8"	929	609	699	718	13,331	19,276	15,495	33,347	12,631	567	227	924	98,753	271	500	694
385	5/8"	9,510	10,032	10,024	9,281	8,814	6,916	6,197	10,813	5,712	8,037	7,732	5,214	98,282	269	200	278
491	5/8"	5,263	4,515	3,829	3,630	3,003	16,149	10,159	20,448	17,550	4,658	3,383	4,819	97,406	267	328	455
394	5/8"	2,911	2,349	4,048	729	12,181	14,866	14,217	21,861	11,345	812	6,331	5,741	97,381	267	459	637
429	5/8"	6,891	5,990	5,861	7,129	7,397	6,885	12,831	15,717	8,548	6,182	7,639	6,253	97,323	267	414	575
745	3/4"	765	221	63	307	9,355	18,691	23,579	19,155	19,139	5,157	5	604	97,041	266	761	1056
359	5/8"	744	1,123	1,638	463	13,999	15,621	12,120	39,192	10,616	349	777	137	96,779	265	391	543
760	5/8"	5,211	4,922	2,327	4,465	10,720	14,377	15,531	15,509	8,225	7,301	3,948	4,164	96,700	265	501	696
476	5/8"	4,144	5,256	2,970	3,563	4,205	13,872	10,086	23,715	12,819	4,582	4,972	4,109	94,293	258	325	452
412	5/8"	2,946	370	1,918	875	9,186	11,210	18,996	28,630	13,529	3,991	913	1,396	93,960	257	613	851
822	3/4"	1,978	980	939	734	6,875	17,083	23,367	17,804	20,004	3,437	169	584	93,954	257	754	1047
430	5/8"	994	1,489	1,263	2,623	91	20,633	17,071	22,899	17,801	5,741	0	2,896	93,501	256	551	765
436	5/8"	2,129	1,110	2,495	1,860	9,975	8,242	23,272	24,311	18,117	1,024	464	471	93,470	256	751	1043
433	5/8"	2,885	4,819	3,880	2,679	2,701	13,009	9,308	29,683	11,697	3,397	3,593	4,925	92,576	254	300	417
498	5/8"	7,098	6,301	5,877	7,531	7,967	9,799	7,641	13,673	7,350	6,142	6,468	6,136	91,983	252	246	342
396	5/8"	8,449	6,121	5,987	4,944	6,467	11,053	10,382	15,583	10,662	4,940	1,970	3,261	89,819	246	335	465
471	5/8"	5,421	5,181	5,730	5,215	6,922	9,662	9,050	11,106	9,818	5,575	6,731	9,121	89,532	245	292	405
496	5/8"	6,955	4,756	6,100	3,945	2,157	4,587	2,305	10,752	29,430	6,758	4,693	5,090	87,528	240	74	103
712	3/4"	1,593	14,584	5,323	307	5,043	5,736	14,889	15,626	13,026	3,450	2,213	5,157	86,947	238	480	667
454	5/8"	12,752	11,293	7,425	2,084	3,044	11,922	11,838	13,914	5,362	1,797	748	4,556	86,735	238	382	530
489	5/8"	7,746	9,246	7,139	8,762	7,011	8,418	6,198	8,891	6,013	4,766	6,373	5,591	86,154	236	200	278
469	5/8"	2,308	1,927	2,065	4,296	10,099	11,811	8,355	23,716	12,696	3,108	1,804	2,285	84,470	231	270	374
378	3/4"	5,299	4,790	5,032	4,218	7,425	10,119	11,956	15,541	6,743	4,475	4,765	3,041	83,404	229	386	536
20	1"	9,941	6,567	8,565	11,540	1,889	3,823	9,028	6,318	6,036	5,831	4,527	8,654	82,719	227	291	404
480	5/8"	7,200	10,558	6,239	1,523	8,172	8,423	5,686	4,654	9,721	8,779	4,951	4,333	80,239	220	183	255
337	5/8"	1,490	664	60	1,086	3,341	8,323	5,386	13,912	18,864	9,062	6,857	7,311	76,356	209	174	241
415	5/8"	5,845	4,794	4,235	6,368	5,908	6,767	5,990	9,965	6,656	7,278	6,227	5,049	75,082	206	193	268
461	5/8"	6,141	4,785	4,523	4,888	8,791	7,025	5,205	13,453	5,353	4,838	3,892	4,796	73,690	202	168	233
499	5/8"	1,294	3,354	2,426	2,527	3,138	5,152	34,550	4,198	5,972	1,296	2,482	6,922	73,311	201	1,115	1548
1150C	5/8"						1,180	1,380	38,709	15,228	11,034	3,414	2,004	72,949	200	45	62
362	5/8"	3,125	5,444	5,672	5,760	6,642	8,541	6,763	9,065	6,613	4,627	4,994	5,310	72,556	199	218	303
423	5/8"	9,260	3,748	4,903	5,004	5,184	5,762	9,437	8,060	4,917	2,357	3,551	7,049	69,232	190	304	423
327	5/8"	4,592	5,129	4,179	3,871	8,221	7,224	10,111	5,041	6,377	4,300	4,714	4,653	68,412	187	326	453
443	5/8"	59,399	1,252	613	0	761	439	1	1,608	385	283	867	2,280	67,888	186	0	0
326	1"	16,945	5,646	2,510	2,751	4,438	5,163	4,798	8,629	4,669	5,026	2,958	4,027	67,560	185	155	215
435	5/8"	2,625	2,741	960	1,261	25,972	6,113	7,140	7,124	6,581	1,715	2,285	2,557	67,074	184	230	320
851	3/4"	441	808	742	70	1,885	13,493	10,798	12,336	14,890	6,676	1,587	3,164	66,890	183	348	484
405	5/8"	6,480	4,210	10,789	4,627	4,108	4,134	3,928	4,861	4,429	5,065	5,358	6,737	64,726	177	127	176
346	5/8"	3,380	2,816	2,734	3,147	4,258	13,633	9,105	10,317	5,609	3,381	2,979	2,680	64,039	175	294	408
181	5/8"	8,335	6,065	6,923	11,030	6,326	3,543	5,388	9,143	6,713	166	48	0	63,680	174	174	241
356	5/8"	5,664	3,667	2,473	1,182	2,332	4,080	5,121	18,125	11,456	4,940	1,913	2,656	63,609	174	165	229
373	5/8"	4,328	3,453	3,835	4,446	3,055	6,444	6,065	13,415	4,987	4,202	3,301	1,438	58,969	162	196	272
338	5/8"	4,065	2,125	2,326	2,019	7,870	3,084	2,079	21,557	2,850	472	4,188	5,045	57,680	158	67	93
470	5/8"	3,970	6,467	4,971	4,017	4,095	4,461	1,728	7,636	7,093	2,954	4,641	5,044	57,077	156	56	77
425	5/8"	3,841	1,572	4,303	1,077	5,557	9,842	10,437	14,806	2,031	0	474	2,630	56,570	155	337	468
868	3/4"	943	0	79	175	4,800	19,886	11,422	9,529	7,252	2,113	10	316	56,525	155	368	512
478	5/8"	10,561	5,739	6,918	1,373	1,091	4,700	7,880	1,159	2,561	663	2,961	10,617	56,223	154	254	353
376	5/8"	1,225	1,747	1,112	240	1,005	229	1,457	22,025	18,070	5,996	1,853	800	55,759	153	47	65
361	5/8"	2,604	26,393	4,622	1,756	94	0	1	10,493	5,401	564	403	2,198	54,529	149	0	0
1152	3/4"						4,159	9,351	14,912	4,922	18,672	1,515	636	54,167	148	302	419

Customer #	Meter Size	Jan	Feb	Mar	Apr	May	June	July	Aug	Sept	Oct	Nov	Dec	Total	Annual Demand gpd/connection	July Demand (maximum month) gpd/connection	July MDD gpd
492	5/8"	4,518	3,733	4,244	4,137	4,643	5,045	4,309	7,825	4,539	3,082	3,789	3,073	52,937	145	139	193
431	5/8"	1,251	13,203	3,530	507	289	2,876	16,834	10,492	401	144	954	2,209	52,690	144	543	754
503	5/8"	6,010	4,350	4,884	5,133	4,178	4,367	2,536	6,172	3,887	3,353	2,911	4,802	52,583	144	82	114
848	3/4"	2,574	2	0	0	6,013	8,280	9,063	10,988	10,629	1,005	2,145	869	51,568	141	292	406
393	5/8"	5,260	3,499	2,067	3,502	4,398	4,251	3,236	6,555	4,110	3,916	6,320	3,943	51,057	140	104	145
409	5/8"	4,038	3,614	4,128	4,011	4,443	1,714	2,597	10,794	4,655	3,395	2,700	4,574	50,663	139	84	116
390	5/8"	4,307	1,827	1,675	1,961	2,825	921	1,100	1,990	9,773	5,468	10,955	7,628	50,430	138	35	49
366	5/8"	2,878	2,422	2,632	3,129	4,448	3,171	4,483	5,125	3,997	6,400	4,881	5,778	49,344	135	145	201
500	5/8"	5,221	159	2,330	1,444	389	7,306	2	25,746	1,957	2	8	4,256	48,820	134	0	0
406	5/8"	5,076	3,196	2,998	4,713	2,853	6,533	6,279	8,564	2,707	1,736	1,431	2,626	48,712	133	203	281
398	3/4"	2,682	2,647	2,511	2,591	4,423	5,338	5,925	9,844	3,932	2,133	2,188	3,732	47,946	131	191	265
873	3/4"	2,255	430	248	0	5,694	3,778	14,086	11,128	4,804	266	745	2,973	46,407	127	454	631
397	5/8"	14,000	1,393	1,184	843	1,017	1,642	6,167	9,210	7,238	414	1,006	1,839	45,953	126	199	276
1147	1"						5,011	30,929	1,123	754	3,340	3,153	1,592	45,902	126	998	1386
762	5/8"	659	1,046	350	874	1,546	0	16,364	1,980	1,890	0	6,222	13,353	44,284	121	528	733
404	5/8"	2,076	1,800	1,359	1,888	3,394	5,478	10,381	5,432	1,888	1,670	1,721	44,175	121	235	327	
1124	3/4"	16	484	723	3,828	2,100	3,630	4,758	6,135	5,222	5,455	4,737	5,833	42,921	118	153	213
1125	3/4"	1,253	2,356	3,736	3,247	3,449	6,951	4,879	6,942	3,634	2,473	2,008	1,909	42,837	117	157	219
936	5/8"	2,775	2,322	2,008	5,616	4,300	6,832	1,691	4,265	3,023	3,085	3,672	3,104	42,693	117	55	76
444	5/8"	2,895	0	1,136	928	3,636	2,365	19,238	5,767	1,852	447	2,162	2,240	42,666	117	621	862
336	5/8"	2,412	1,142	4,889	2,779	5,809	6,332	9,925	5,281	1,200	351	651	1,438	42,209	116	320	445
728	3/4"	3,823	3,647	3,056	2,786	2,183	3,003	5,045	7,049	2,762	2,565	2,897	3,041	41,857	115	163	226
354	5/8"	4,426	3,556	3,787	3,046	3,861	3,250	2,796	4,454	2,823	3,045	2,991	3,474	41,509	114	90	125
328	5/8"	2,645	2,863	2,318	5,302	3,883	4,119	6,826	2,445	2,966	2,284	2,219	2,593	40,463	111	220	306
106	1"	3,730	3,712	3,056	4,126	1,655	2,261	2,003	7,032	3,171	3,412	1,055	5,118	40,331	110	65	90
501	5/8"	7,913	3,275	1,755	4,259	3,230	1,815	2,061	3,048	1,423	4,038	1,876	3,381	38,074	104	66	92
422	5/8"	677	1,409	820	484	0	0	5,133	14,892	6,211	1,450	279	5,964	37,319	102	166	230
809	1"	2,486	3,512	15,556	403	1,522	1,146	1,479	3,217	4,707	1,131	381	854	36,394	100	48	66
97	5/8"	2,641	2,365	2,390	2,508	6,652	4,394	4,016	3,554	1,869	1,261	1,252	3,421	36,323	100	130	180
875	5/8"	7,296	3,682	9,075	1,125	288	293	187	11,374	606	268	0	1,630	35,824	98	6	8
426	5/8"	6,405	5,577	5,073	4,421	1,533	1,405	2,649	5,177	3	504	153	2,884	35,784	98	85	119
473	5/8"	204	941	1,079	137	2,843	6,050	4,173	11,058	6,084	2,788	57	165	35,579	97	135	187
479	5/8"	4,718	3,819	2,109	1,314	826	0	2,720	1,400	119	305	8,546	9,666	35,542	97	88	122
1150A	5/8"	3,187	1,391	3,987	355	81	5,168	4,659	10,375	855	354	476	4,214	35,102	96	150	209
16	3/4"	1,257	5,492	8,498	6,251	3,767	2,534	2,263	101	0	0	0	4,179	34,342	94	73	101
428	5/8"	3,129	4,263	597	13,739	5,969	0	2,878	390	1,866	108	18	1,320	34,277	94	93	129
453	5/8"	7,697	7,048	1,335	3,994	263	476	2,664	3,291	1,291	588	73	4,945	33,665	92	86	119
895	1"	4,723	2,971	848	1,212	405	32	411	4,798	979	1,136	4,971	10,812	33,298	91	13	18
343	5/8"	3,180	1,853	2,109	468	409	447	6,307	8,167	452	67	2,886	6,489	32,834	90	203	283
427	5/8"	5,062	3,682	3,196	3,320	2,503	2,317	1,835	2,217	1,669	1,350	982	4,628	32,761	90	59	82
472	5/8"	1,083	3,250	5,847	3,766	2,405	3,380	2,916	2,195	1,540	1,193	351	4,631	32,557	89	94	131
449	5/8"	3,420	2,920	2,760	2,873	2,871	2,432	2,021	1,246	3,076	2,431	3,815	2,670	32,535	89	65	91
364	5/8"	2,995	4,427	16,898	803	0	71	695	2,651	1,060	7	1,303	1,343	32,253	88	22	31
932	3/4"	3,753	2,111	1,088	1,569	1,572	1,506	1,644	7,096	5,731	385	468	4,629	31,552	86	53	74
342	5/8"	2,367	1,676	2,716	2,493	2,545	2,380	5,057	1,800	1,637	2,238	3,685	2,417	31,011	85	163	227
322	3/4"	12,319	8,916	7,609	99	8	223	89	182	69	189	274	760	30,737	84	3	4
467	5/8"	541	0	167	123	1,394	2,332	4,366	11,677	6,086	1,109	148	984	28,927	79	141	196
392	5/8"	2,644	1,962	1,353	2,196	0	0	15,900	1,142	406	15	955	1,447	28,020	77	513	712
349	3/4"	753	724	1,378	1,049	801	2,212	5,387	5,179	4,864	1,844	1,596	1,716	27,503	75	174	241
497	5/8"	2,601	1,987	1,486	937	5	486	13,095	411	373	120	0	5,371	26,872	74	422	587
399	5/8"	4,285	3,750	3,422	3,364	1,813	1,011	1,968	1,907	2,164	1,429	709	828	26,650	73	63	88
11	5/8"	1,800	2,216	2,089	1,231	965	1,894	2,106	4,271	1,148	572	5,580	2,141	26,013	71	68	94
369	5/8"	3,874	3,148	4,449	5,227	2,182	754	849	202	89	116	2,584	2,490	25,964	71	27	38
21	3/4"	2,109	51	355	391	1,021	2,052	2,514	3,481	1,770	2,397	6,048	3,683	25,872	71	81	113
924	5/8"	442	988	1,504	2	3,403	205	4,189	13,738			313	781	25,565	70	135	188
1122	1"	910	575	598	706	1,749	1,715	5,651	6,977	1,047	1,000	2,454	1,959	25,341	69	182	253
885	1"	1,449	240	796	22	415	2,259	73	98	4,235	21	31	14,678	24,317	67	2	3
876	3/4"	1,792	1,008	1,360	11	44	3,758	4,919	4,771	3,263	0	0	3,260	24,186	66	159	220
411	5/8"	5,637	4,157	4,003	4,166	4,065	117	4	4	0	15	12	7	22,187	61	0	0
869	5/8"	9,563	2,021	3,348	3,026	110	222	1,783	450	71	104	85	1,348	22,131	61	58	80
382	5/8"	897	2,203	558	1,560	860	1,435	4,821	3,559	1,504	1,352	818	2,312	21,879	60	156	216
17	5/8"	2,683	2,359	2,245	245	582	155	445	2,469	833	3,063	3,651	2,950	21,680	59	14	20
477	5/8"	5,562	8,606	824	58	3	89	296	127	668	244	88	4,837	21,402	59	10	13
15	5/8"	2	11,655	632	1,394	0	6	1,008	3,387	84	0	10	1,837	20,015	55	33	45

Customer #	Meter Size	Jan	Feb	Mar	Apr	May	June	July	Aug	Sept	Oct	Nov	Dec	Total	Annual Demand gpd/connection	July Demand (maximum month) gpd/connection	July MDD gpd
344	5/8"	2,904	1,591	2,122	2,131	516	952	1,328	1,879	1,385	1,374	1,337	2,360	19,879	54	43	59
367	5/8"	10,709	1,530	418	808	103	279	182	851	2,397	172	1,523	443	19,415	53	6	8
389	5/8"	1,549	2,624	3,463	304	274	749	1,764	2,721	1,118	905	749	3,055	19,275	53	57	79
921	3/4"	269	559	848	5,250	2,188	607	617	2,181	2,924	1,980	1,746	0	19,169	53	20	28
850	3/4"	733	12	238	131	1,374	1,480	2,921	10,183	680	408	158	802	19,120	52	94	131
381	5/8"	2,842	1,381	2,235	261	1,228	786	4,034	578	2,178	280	550	1,203	17,556	48	130	181
503	5/8"	1,496	2,000	997	1,364	0	0	2,679	4,719	996	205	418	2,141	17,015	47	86	120
445	5/8"	1,705	2,338	7,864	62	0	187	125	1	238	109	0	3,687	16,316	45	4	6
370	5/8"	2,542	2,683	3,025	2,605	291	121	2,461	189	952	0	262	1,030	16,161	44	79	110
266	5/8"	0	0	0	1,030	1,568	541	1,421	2,580	3,445	1,477	1,998	1,809	15,869	43	46	64
14	3/4"	1,372	1,025	1,927	758	108	1	99	3,145	3,870	729	1,284	1,547	15,865	43	3	4
442	5/8"	2,147	690	573	859	966	24	5,683	3,464	19	19	752	17	15,213	42	183	255
357	5/8"	457	0	641	1,197	4,361	533	1,625	2,771	1,508	495	813	0	14,401	39	52	73
333	5/8"	1,236	300	1,944	1,181	0	1,380	2,859	2,735	1,345	0	144	399	13,523	37	92	128
457	5/8"	5,049	1,067	331	0	406	279	252	40	431	0	216	5,396	13,467	37	8	11
403	5/8"	1,171	2,867	741	1,492	1,088	253	446	2,488	1,246	35	179	768	12,774	35	14	20
414	5/8"	1,080	836	997	17	311	972	888	1,562	1,178	1,349	1,086	956	11,232	31	29	40
495	5/8"	379	418	810	240	2,554	188	1	4,227	156	349	1,119	785	11,226	31	0	0
417	5/8"	1,040	7,253	450	0	672	0	832	785	177	0	0	0	11,209	31	27	37
339	5/8"	2,221	1,760	1,997	2,614	307	63	573	310	701	508	0	0	11,054	30	18	26
763	5/8"	790	918	1,085	522	341	163	1,231	2,046	201	630	1,515	871	10,313	28	40	55
928	3/4"	1,940	338	892	205	418	137	252	312	20	1,650	1,958	2,027	10,149	28	8	11
407	5/8"	2,949	1,676	1,114	757	74	10	5	1,124	1,331	19	38	1,003	10,100	28	0	0
363	5/8"	1,169	466	411	1,121	0	620	2,587	507	1,379	1	0	1,040	9,301	25	83	116
448	5/8"	1,002	243	449	52	4	166	150	172	66	10	4,545	2,401	9,260	25	5	7
451	5/8"	3,032	1,387	240	174	643	549	29	1,590	0	0	0	381	8,025	22	1	1
432	5/8"	1,887	1,483	215	771	0	0	731	816	303	159	1,062	561	7,988	22	24	33
420	5/8"	2	1,338	487	488	50	1	2,032	1,276	523	518	426	425	7,566	21	66	91
1155	3/4"						1,334	0	4,351	1,353	121	285	1	7,445	20	0	0
490	5/8"	794	525	2,011	0	0	162	1,247	1,127	0	0	428	958	7,252	20	40	56
345	5/8"	1,658	778	172	310	0	20	1,773	1,373	16	0	2	180	6,282	17	57	79
1157	3/4"							3,798	1,380	510	326	0	0	6,014	16	0	0
317	5/8"	1,260	241	772	430	300	0	845 no read	721	41	94	784	5,488	15	27	38	
380	3/4"	522	784	1,784	1,492	0	0	0	1	374	61	0	444	5,462	15	0	0
1121	3/4"	818	839	947	1,742	263	130	445	35	30	32	59	5,372	15	14	20	
450	5/8"	688	1,155	1,251	20	5	179	33	147	238	8	10	203	3,937	11	1	1
410	5/8"	1,597	0	0	0	0	0	362	469	462	701	53	0	3,644	10	12	16
1027	1"										1,731	680	1,085	3,496	10	0	0
400	5/8"	840	723	583	233	60	11	127	3	1	0	117	579	3,277	9	4	6
419	5/8"	588	256	0	134	61	83	213	763	412	0	220	170	2,900	8	7	10
18	5/8"	266	502	178	0	0	0	0	1,615	300	14	0	0	2,875	8	0	0
1153	3/4"						0	1,240	1,085	0	0	0	0	2,325	6	40	56
446	5/8"	184	206	188	63	216	101	357	127	151	319	177	98	2,187	6	12	16
494	5/8"	705	290	29	42	34	0	0	311	0	1	60	435	1,907	5	0	0
1160	1"	0	0	0	0	0	523	0	0	0	523	285	0	1,331	4	0	0
12	5/8"	0	0	0	0	0	0	0	2	0	0	0	0	2	0.005	0	0
712	3/4"	0	0	0	0	0	0	0	2	0	0	0	0	2	0.005	0	0
															317	625	

Customer #	Meter Size	Jan	Feb	Mar	Apr	May	June	July	Aug	Sept	Oct	Nov	Dec	Total	Annual Demand gpd/connection	July Demand (maximum month) gpd/connection	July MDD gpd
<b>Multiple Units</b>																	
738	3/4"	1662	2132	3033	0	47786	158979	386033	65087	53554	6215	1708	1991	728,180	1,995	12,453	17,296
		13656	1323	625	1370	34871	77692	83631	109406	84721	15681	557	592	424,125	1,162	2,698	3,747
351	5/8"	12047	9466	8622	13097	46263	48592	60212	57979	44250	9489	8445	11477	329,939	904	1,942	2,698
1051	3/4"	2385	355	407	1442	40914	35374	53019	78300	44834	18751	209	1636	277,626	761	1,710	2,375
	5/8"	12614	76	81	79	29891	41056	69077	58180	50465	10723	45	33	272,320	746	2,228	3,095
481	5/8"	15410	12716	13504	8044	5260	4388	61390	114323	5551	4944	5671	6029	257,230	705	1,980	2,750
7	5/8"	43417	29854	25652	12265	11227	11789	13011	12404	13786	15665	15546	23146	227,762	624	420	583
452	5/8"	10303	8809	7978	9438	20531	29738	32615	17767	34494	9421	10072	8719	199,885	548	1,052	1,461
447	1"	15129	13393	17444	17183	14087	14620	21482	23207	18402	11958	14230	17780	198,915	545	693	962
3	5/8"	9685	7946	16994	6166	110923	3700	3786	6999	5468	4863	4732	7003	188,265	516	122	170
194	5/8"	14006	11710	12412	12639	13215	19062	16462	29429	11599	10937	11849	11194	174,514	478	531	738
316	5/8"	6548	7033	15547	3363	19908	21483	27392	22710	14580	4796	4395	5226	152,981	419	884	1,227
324	5/8"	1042	1247	544	1291	4980	36636	14554	51226	34256	4958	512	559	151,805	416	469	652
919	5/8"	134131	1198	263	548	230	185	191	326	528	189	1621	366	139,776	383	6	9
488	5/8"	8850	5800	5566	5661	8991	18975	8034	29854	16228	5905	6844	7127	127,835	350	259	360
13	5/8"	23926	5337	3350	4399	1436	12576	14045	22831	13898	10635	7521	4864	124,818	342	453	629
4	5/8"	12116	11837	16489	15336	9588	9036	2655	9644	5361	3805	10896	10028	116,791	320	86	119
393	5/8"	3915	3352	2486	3152	14603	19877	12539	24632	18078	3361	1837	3483	111,315	305	404	562
368	5/8"	10617	10116	7966	8885	5707	5718	4824	9986	6670	12621	3483	1854	88,447	242	156	216
466	3/4"	6494	6523	6929	6896	6759	4009	6379	10056	7201	7186	6814	8338	83,584	229	206	286
884	3/4"	740	2972	1339	6214	6759	10394	13454	15788	9893	3926	3205	4026	78,710	216	434	603
383	5/8"	3009	2641	2387	2608	6808	5835	18273	15936	7240	3314	3054	2495	73,600	202	589	819
482	5/8"	7295	6733	5011	5011	3468	3771	7752	12961	4081	3561	4768	5592	70,004	192	250	347
377	3/4"	6304	7091	6163	6113	4867	8450	4833	5551	4225	3622	5197	4399	66,815	183	156	217
465	5/8"	7604	5684	5294	4736	5338	4373	4591	7201	3610	3530	4640	8352	64,953	178	148	206
9	5/8"	17446	10406	6060	2888	2033	2088	1173	1597	1217	908	5751	7689	59,256	162	38	53
19	5/8"	6904	5327	2963	3097	3255	3339	3368	4601	4139	4370	3669	4057	49,089	134	109	151
355	5/8"	5276	3894	3411	3205	2528	3474	2515	4418	4528	4804	4057	4842	46,952	129	81	113
462	5/8"	5187	3149	2848	3047	2653	3653	1925	14009	2346	2596	3117	2415	46,945	129	62	86
388	5/8"	7392	3309	2780	3997	2072	2428	3193	5052	2977	2398	2472	4311	42,381	116	103	143
341	5/8"	4664	3824	3713	4188	1491	1241	706	5106	2393	2156	2234	3443	35,159	96	23	32
5	5/8"	3039	1887	1673	1740	2807	1765	2879	3200	1575	1920	1634	6363	30,482	84	93	129
486	5/8"	3542	1019	1234	2238	1887	1869	1496	2042	1918	2870	3244	3074	26,433	72	48	67
493	5/8"	0	0	0	0	0	0	0	1	0	0	0	155	156	0	0	0
															<b>408</b>	<b>908</b>	<b>1,262</b>

**Table A-2 - 2007 Metered Residential Water Usage: MDD July**

Customer #	Meter Size	Jan	Feb	Mar	Apr	May	June	July	Aug	Sept	Oct	Nov	Dec	Total	Annual Demand gpd/connection	July Demand (maximum month) gpd/connection	July MDD gpd
709	3/4"	1,834	11,355	12,407	3,036	64,648	120,781	127,528	138,676	101,221	21,648	736	1,101	604,971	1,657	4,114	5714
401	5/8"	1,535	776	153	342	2,602	46,223	123,158	41,120	21,550	6,470	609	263	244,801	671	3,973	5518
1050	3/4"	2,441	1,997	333	3,485	32,669	83,810	117,946	71,527	34,033	430	1,916	3,311	353,898	970	3,805	5284
755	3/4"	27	35	105	229	26,805	58,872	116,017	76,420	57,243	19,759	48	922	356,482	977	3,742	5198
1086	3/4"	34,316	2,734	1,916	6,711	38,109	53,550	103,781	46,780	38,922	1,648	1,668	449	330,584	906	3,348	4650
350	5/8"	1,917	8,248	4,508	25,458	55,066	71,892	99,031	107,643	117,434	23,474	3,917	5,457	524,045	1,436	3,195	4437
402	5/8"	2,486	2,623	1,557	950	9,642	44,637	91,509	136,108	28,605	10,734	3,861	1,023	333,735	914	2,952	4100
749	3/4"	7,760	6,547	5,609	1,853	16,577	72,681	86,566	66,379	49,171	8,790	604	3,518	326,055	893	2,792	3878
1082	3/4"	11,553	2,835	7,879	9,878	51,886	58,562	85,686	65,599	32,779	5,508	4,498	4,244	340,907	934	2,764	3839
1077	3/4"	4	0		621	17,414	30,822	79,683	81,945	39,101	10,886	122	0	260,598	714	2,570	3570
323	3/4"	37	801	46	698	64,975	91,096	78,693	139,037	76,105	23,438	1,074	3,661	479,661	1,314	2,538	3526
750	3/4"	6,238	5,337	12,147	5,417	42,786	64,758	76,914	58,256	51,997	4,802	5,012	6,531	340,195	932	2,481	3446
740	3/4"	7,100	4,988	4,586	2,377	27,995	48,509	76,074	48,729	38,862	7,442	4,576	1,478	272,716	747	2,454	3408
742	3/4"	1,976	677	3,163	5	25,316	60,086	75,415	72,202	64,223	18,996	556	1,556	324,171	888	2,433	3379
708	1"	23	772	3,713	640	25,704	57,352	71,984	60,786	56,993	20,552	3,074	935	302,528	829	2,322	3225
888	1"	18	4,938	6	2,297	49,986	51,280	70,607	100,466	50,719	2,804	111	1,650	334,882	917	2,278	3163
395	5/8"	104,748	16,352	942	24,576	35,647	47,006	68,426	69,428	135,503	18,955	21,407	24,971	567,961	1,556	2,207	3066
332	3/4"	0	1,316	47	1,181	37,510	67,196	66,697	92,986	57,500	6,198	317	0	330,948	907	2,152	2988
871	1"	39	5,188	8,305	7,307	34,605	61,948	63,045	46,782	28,540	7,957	148	4,975	268,839	737	2,034	2825
744	3/4"	4,926	3,362	1,795	3,717	24,315	30,136	61,416	44,664	45,033	11,754	933	6,259	238,310	653	1,981	2752
739	1"	8,482	4,229	4,971	3,868	29,359	46,525	60,275	59,200	53,175	97,981	24,876	11,827	404,768	1,109	1,944	2701
1123	3/4"	895	157	256	79	15,625	56,333	59,704	58,232	37,678	10,990	5,465	13,939	259,353	711	1,926	2675
484	5/8"	6,012	4,949	6,029	5,101	3,538	6,385	55,469	26,444	13,530	1,750	342	3,527	133,076	365	1,789	2485
756	3/4"	795	449	695	1,432	31,329	41,514	55,202	84,166	68,436	22,498	150	2,963	309,629	848	1,781	2473
938	3/4"	106	496	6	199	20,650	54,267	54,267	55,370	11,021	3,128	1,455	343	201,308	552	1,751	2431
862	3/4"	4,831	2,739	0	439	41,688	57,632	52,789	78,483	49,780	18,002	0	3,383	309,766	849	1,703	2365
761	5/8"	3,012	3,720	2,629	1,174	31,684	42,351	51,242	60,576	26,736	16,939	792	1,644	242,499	664	1,653	2296
827	3/4"	1,785	499	1,425	0	30,551	37,381	50,275	75,572	31,596	211	1,166	1,160	231,621	635	1,622	2252
828	3/4"	6,655	6,888	5,470	6,582	45,901	50,325	49,179	41,888	27,461	5,073	5,472	6,659	257,553	706	1,586	2203
379	3/4"	4,985	3,844	4,185	3,578	11,897	39,840	48,471	30,517	17,260	3,020	5,354	4,848	177,799	487	1,564	2172
879	1"	364	2,037	272	323	524	20,832	47,467	40,961	54,971	9,509	129	525	177,914	487	1,531	2127
758	3/4"	3,055	2,650	346	1,663	2,657	34,983	46,854	54,510	49,807	9,889	1,737	186	208,337	571	1,511	2099
863	1"	168	9,949	113	23,410	7,637	35,981	46,284	40,065	36,842	17,567	2,911	194	221,121	606	1,493	2074
852	3/4"	13,292	11,275	11,948	10,844	42,351	43,919	43,800	57,539	39,956	12,025	9,939	8,156	305,044	836	1,413	1962
418	5/8"	1,932	6,091	2,020	1,500	704	7,342	43,429	32,850	24,039	1,724	484	1,078	123,193	338	1,401	1946
752	3/4"	3,978	3,204	4,079	4,916	16,595	57,941	43,074	56,202	36,075	1,104	2,676	6,855	236,699	648	1,389	1930
1120	1"	1,561	4,254	3,414	16,241	15,089	27,968	42,724	30,744	32,004	3,620	5,267	6,449	189,335	519	1,378	1914
386	5/8"	5,856	3,775	4,205	5,783	30,790	40,886	42,687	57,010	25,801	4,100	4,857	5,558	231,308	634	1,377	1913
887	3/4"	21,646	17,959	18,946	23,011	23,836	37,184	42,254	39,450	59,693	9,606	5,890	9,750	309,225	847	1,363	1893
1061	3/4"	5,472	4,619	4,707	4,452	23,179	48,157	42,226	66,617	37,576	4,036	3,256	7,041	251,338	689	1,362	1892
387	5/8"	7,508	5,788	10,886	10,535	27,504	36,823	41,991	39,807	9,562	7,539	8,113	7,239	213,295	584	1,355	1881
1060	1"	6,045	5,514	7,194	6,967	24,113	32,283	41,221	81,093	34,718	11,259	1,513	6,098	258,018	707	1,330	1847
759	5/8"	2,384	2,568	2,837	2,835	3,362	15,848	41,140	45,057	34,511	704	1,056	3,320	155,622	426	1,327	1843
6	5/8"	9,833	5,309	7,129	6,429	4,220	11,739	39,713	48,820	17,914	8,054	7,004	6,396	172,560	473	1,281	1779
751	3/4"	5,123	1,161	178	1,341	3,159	5,429	39,590	42,975	45,603	17,710	323	1,986	164,578	451	1,277	1774
372	5/8"	6,089	5,360	3,795	2,979	12,636	26,474	39,120	51,696	29,459	8,263	3,218	5,594	194,683	533	1,262	1753
736	3/4"	95	0	2,762	1,906	10,080	29,610	38,630	34,346	34,774	11,861	28	999	165,091	452	1,246	1731
458	5/8"	2,659	1,799	1,032	536	350	16	38,134	97,950	40,351	2,128	334	1,249	186,538	511	1,230	1709
375	3/4"	21,087	16,615	11,595	14,020	8,356	28,007	37,767	94,101	22,181	9,058	11,120	13,551	287,458	788	1,218	1692
459	3/4"	7,267		7,364	31,383	61,211	36,701	68,936	47,223	8,699	8,504	8,924	286,212	784	1,184	1644	
881	1"	not read	15,162	378	580	21,382	38,367	36,191	55,385	40,582	9,051	1,847	5,866	224,791	616	1,167	1621
371	5/8"	7,677	8,455	6,507	8,225	24,244	31,389	36,116	52,557	20,045	4,669	4,553	6,090	210,527	577	1,165	1618
746	3/4"	1,647	2,041	912	19	15,809	28,865	35,657	31,772	21,189	566	458	2,213	141,148	387	1,150	1598
855	1"	14,545	12,636	11,897	4,191	10,646	27,733	35,595	54,655	20,983	4,408	7,046	10,686	215,021	589	1,148	1595
1139	1"	0	0	99	802	7,477	37,561	34,776	32,575	33,276	7,076	715	2,131	156,488	429	1,122	1558
764	5/8"	1,346	262	1,486	20,828	40,424	52,223	34,760	35,647	33,563	27,939	8,283	454	257,215	705	1,121	1557
1142	3/4"	58	883	446	11,009	25,975	33,830	34,596	41,354	34,489	4,483	132	195	187,450	514	1,116	1550
743	3/4"	3,055	5,319	1,054	0	7,079	29,609	34,585	37,330	25,241	4,611	0	4,135	152,018	416	1,116	1550
499	5/8"	1,294	3,354	2,426	2,527	3,138	5,152	34,550	4,198	5,972	1,296	2,482	6,922	73,311	201	1,115	1548
861	1"	1,019	1	12	40	2,377	29,023	34,092	33,608	20,991	2,453	983	1,434	126,033	345	1,100	1527
468	5/8"	4,406	2,372	2,064	5,897	30,437	32,509	33,592	55,770	21,763	4,454	3,243	9,692	206,199	565	1,084	1505
922	3/4"	3,315	1,544	833	3,066	12,281	28,064	31,604	37,701	28,992	1,034	203	4,617	153,254	420	1,019	1416

Customer #	Meter Size	Jan	Feb	Mar	Apr	May	June	July	Aug	Sept	Oct	Nov	Dec	Total	Annual Demand gpd/connection	July Demand (maximum month) gpd/connection	July MDD gpd
748	3/4"	2,405	1,219	127	42	12,979	22,526	31,428	17,369	23,774	11,830	217	1,448	125,364	343	1,014	1408
440	5/8"	1,780	1,218	1,059	539	26,840	33,209	31,180	41,462	38,828	3,004	90	2,654	181,863	498	1,006	1397
1147	1"						5,011	30,929	1,123	754	3,340	3,153	1,592	45,902	126	998	1386
927	3/4"	3,319	3,221	2,632	38,830	102,465	62,914	30,902	28,130	26,647	4,342	1,377	2,867	307,646	843	997	1385
485	3/4"	10,447	5,469	5,110	2,179	19,377	26,515	29,962	69,801	32,463	4,217	859	54,965	261,364	716	967	1342
460	5/8"	7,822	5,104	5,230	6,532	33,785	43,009	29,773	67,102	23,676	4,645	4,303	8,294	239,275	656	960	1334
754	3/4"	5,659	4,576	6,117	1,164	22,142	23,127	29,357	29,011	32,333	18,470	1,109		173,065	474	947	1315
874	3/4"	1,056	38	466	3	14,543	27,061	28,779	39,403	32,215	10,983	936	3,356	158,839	435	928	1289
765	3/4"	426	399	517	2,569	7,556	9,540	28,268	29,499	24,731	8,311	127	75	112,018	307	912	1266
865	3/4"	817	1	0	0	17,513	22,990	28,035	25,688	20,814	3,298	554	904	120,614	330	904	1256
353	5/8"	5,790	4,752	4,579	5,752	20,517	22,210	27,991	31,029	12,334	6,566	6,564	6,055	154,139	422	903	1254
733	3/4"	1,531	1,537	604	113	18,174	30,649	27,986	45,812	35,534	5,118	2	3,108	170,168	466	903	1254
421	5/8"	1,640	2,241	1,247	637	14,292	22,541	27,900	28,093	21,186	6,358	0	1,948	128,083	351	900	1250
365	5/8"	2,781	2,811	2,948	4,445	14,373	11,390	27,143		17,560	41,526	39,363	33,649	197,989	542	876	1216
334	5/8"	16,908	8,437	10,556	6,443	5,810	12,860	26,746	39,980	21,968	1,073	198	4,591	155,570	426	863	1198
675	5/8"	931	4	132	392	333	33,430	26,724	42,257	28,804	6,504	87	755	140,353	385	862	1197
757	3/4"	2,714	2,797	4,447	35,781	2,035	22,107	26,538	29,507	32,614	7,984	1,100	409	168,033	460	856	1189
853	3/4"	6,715	10,178	5,131	7,091	11,195	23,756	26,479	33,347	26,953	8,368	5,643	5,950	170,806	468	854	1186
414	5/8"	3,418	2,881	3,200	6,156	38,911	23,760	25,628	71,629	8,372	5,639	2,844	3,379	195,817	536	827	1148
753	3/4"	194	1,745	64	51	15,477	20,676	25,462	22,905	21,915	12,699	81	1,257	122,526	336	821	1141
725	3/4"	107,450	10,596	1,954	521	8,239	17,582	25,353	58,498	28,367	7,703	2	4,381	270,646	741	818	1136
1081	3/4"	2,045	1,334	1,322	996	11,207	18,743	25,033	46,946	29,224	688	1,865	2,321	141,724	388	808	1122
360	5/8"	0	0	0	1,146	23,240	30,016	24,803	50,654	12,282	0	7,630	0	149,771	410	800	1111
1058	1"	9,181	1,639	3,713	5,019	13,449	22,205	24,716	22,107	15,628	15,513	71	51	133,292	365	797	1107
872	3/4"	913	2	197	127	6,425	20,711	24,401	26,649	19,305	3,176	200	2,152	104,258	286	787	1093
880	1"	2,103	1,638	3,935	0	52,178	40,770	24,226	64,348	36,184	9,862	395	1,676	237,315	650	781	1085
741	3/4"	4,743	4,499	4,767	2,928	13,298	16,686	23,692	23,486	16,398	5,068	34	3,462	119,061	326	764	1061
745	3/4"	765	221	63	307	9,355	18,691	23,579	19,155	19,139	5,157	5	604	97,041	266	761	1056
929	3/4"	11,983	21,430	9,367	7,390	5,954	20,094	23,442	32,263	17,399	7,927	3,377	3,548	164,174	450	756	1050
822	3/4"	1,978	980	939	734	6,875	17,083	23,367	17,804	20,004	3,437	169	584	93,954	257	754	1047
436	5/8"	2,129	1,110	2,495	1,860	9,975	8,242	23,272	24,311	18,117	1,024	464	471	93,470	256	751	1043
434	5/8"	4,657	4,469	3,691	4,494	17,269	20,225	23,005	20,396	13,479	4,563	4,154	3,776	124,178	340	742	1031
886	5/8"	0	21	5	335	16,522	18,200	22,684	25,754	21,896	4,693	2,643	3,055	115,808	317	732	1016
923	3/4"	643	539	0	0	21,838	23,141	22,583	35,865	31,819	5,441	1,403	1,716	144,988	397	728	1012
1026	3/4"	12,555	6,887	9,580	8,896	5,024	20,300	21,575	26,794	20,848	10,289	4,803	5,076	152,627	418	696	967
352	5/8"	3,762	5,869	4,587	5,834	6,930	15,270	21,455	39,459	15,879	625	684	1,314	121,668	333	692	961
384	5/8"	6,157	5,201	4,649	6,733	19,446	20,486	20,812	29,075	10,502	4,022	5,360	8,455	140,898	386	671	932
726	3/4"	7,080	4,781	5,659	6,612	22,468	33,852	20,367	45,445	24,902	4,695	4,485	5,674	186,020	510	657	913
1048	3/4"	550	2,306	453	39	22,528	20,198	20,333	25,969	22,361	3,270	13	1,000	119,020	326	656	911
883	3/4"	3,147	3,182	3,102	616	11,712	28,173	20,009	26,579	9,690	5,698	11,336	42,678	165,922	455	645	896
8	3/4"	3,624	2,671	4,174	3,491	10,884	16,936	19,914	23,709	13,365	3,659	2,995	4,189	109,611	300	642	892
179	5/8"	4,449	3,575	4,120	3,812	16,993	27,734	19,855	46,368	23,059	4,700	5,540	4,142	164,347	450	640	890
847	3/4"	35,654	6,712	8,459	9,816	12,154	10,530	19,833	24,986	20,306	5,950	1,414	7,275	163,089	447	640	889
1057	3/4"	4,701	102	224	312	74,611	14,950	19,833	18,680	15,566	2,515	578	2,150	154,222	423	640	889
1056	5/8"	3,875	3,811	1,365	57	16,654	5,415	19,788	29,289	22,933	6,783	1,076	2,952	113,998	312	638	887
408	5/8"	6,599	6,545	5,751	5,044	4,981	9,441	19,669	32,946	25,454	2,049	2,093	2,394	122,966	337	634	881
475	5/8"	0	1,730	931	54	35	10,658	19,516	28,027	36,161	5,585	1,407	1,864	105,968	290	630	874
1030	3/4"	9,789	70	572	1,638	26,721	17,400	19,249	24,536	21,104	1,280	701	1,555	124,615	341	621	862
444	5/8"	2,895	0	1,136	928	3,636	2,365	19,238	5,767	1,852	447	2,162	2,240	42,666	117	621	862
412	5/8"	2,946	370	1,918	875	9,186	11,210	18,996	28,630	13,529	3,991	913	1,396	93,960	257	613	851
335	3/4"	4,494	3,539	3,728	3,785	12,033	26,859	18,682	36,796	16,704	9,965	3,624	3,928	144,137	395	603	837
735	3/4"	1,792	220	1,191	252	13,121	23,922	18,403	35,393	34,253	11,012	6,657	10,629	156,845	430	594	825
730	3/4"	7,847	3,632	4,301	4,953	12,214	16,638	17,997	62,389	21,994	9,690	4,187	4,655	170,497	467	581	806
737	3/4"	20	960	7,058	1,211	2,555	12,538	17,962	41,990	56,016	14,147	111	54	154,622	424	579	805
866	3/4"	1,841	66,093	39,333	9	15,877	20,307	17,628	39,079	27,000	596	98	4,718	232,579	637	569	790
430	5/8"	994	1,489	1,263	2,623	91	20,633	17,071	22,899	17,801	5,741	0	2,896	93,501	256	551	765
920	3/4"	5,138	7,710	2,959	986	6,487	18,484	16,998	61,489	42,540	16,224	63	1,490	180,568	495	548	762
431	5/8"	1,251	13,203	3,530	507	289	2,876	16,834	10,492	401	144	954	2,209	52,690	144	543	754
1150B	5/8"	8,189	14,459	37,747	11,973	9,685	8,400	16,625	13,366	11,425	8,238	9,705	10,085	159,897	438	536	745
762	5/8"	659	1,046	350	874	1,546	0	16,364	1,980	1,890	0	6,222	13,353	44,284	121	528	733
374	5/8"	2,659	2,312	373	1,630	10,414	12,534	16,314	34,540	13,833	8,125	8,643	3,124	114,501	314	526	731
729	3/4"	2,938	1,906	3,193	5,423	3,584	3,187	16,082	55,332	37,375	481	403	602	130,506	358	519	721
392	5/8"	2,644	1,962	1,353	2,196	0	0	15,900	1,142	406	15	955	1,447	28,020	77	513	712
391	5/8"	4,206	3,384	3,225	4,433	19,543	14,698	15,633	31,044	20,165	6,136	6,050	4,086	132,603	363	504	700



Customer #	Meter Size	Jan	Feb	Mar	Apr	May	June	July	Aug	Sept	Oct	Nov	Dec	Total	Annual Demand gpd/connection	July Demand (maximum month) gpd/connection	July MDD gpd
760	5/8"	5,211	4,922	2,327	4,465	10,720	14,377	15,531	15,509	8,225	7,301	3,948	4,164	96,700	265	501	696
455	5/8"	929	609	699	718	13,331	19,276	15,495	33,347	12,631	567	227	924	98,753	271	500	694
439	5/8"	3,221	2,617	2,365	1,972	13,225	15,904	15,427	26,538	16,136	8,836	10,511	13,793	130,545	358	498	691
712	3/4"	1,593	14,584	5,323	307	5,043	5,736	14,889	15,626	13,026	3,450	2,213	5,157	86,947	238	480	667
856	3/4"	1,296	321	1,396	636	15,579	28,180	14,842	47,448	28,555	5,870	69	1,651	145,843	400	479	665
727	3/4"	1,612	1,250	1,251	1,563	15,341	17,907	14,567	52,129	23,941	2,450	2,549	3,409	137,969	378	470	653
394	5/8"	2,911	2,349	4,048	729	12,181	14,856	14,217	21,861	11,345	812	6,331	5,741	97,381	267	459	637
348	5/8"	11,488	13,339	11,562	17,723	19,299	17,736	14,190	26,207	14,688	9,700	8,851	9,824	174,607	478	458	636
873	3/4"	2,255	430	248	0	5,694	3,778	14,086	11,128	4,804	266	745	2,973	46,407	127	454	631
940	3/4"	4,478	1,444	1,589	2,437	1,766	17,981	14,029	31,858	51,640	5,974	1,652	3,926	138,774	380	453	629
497	5/8"	2,601	1,987	1,486	937	5	486	13,095	411	373	120	0	5,371	26,872	74	422	587
429	5/8"	6,891	5,990	5,861	7,129	7,397	6,885	12,831	15,717	8,548	6,182	7,639	6,253	97,323	267	414	575
2	5/8"	3,706	1,179	25,989	209	2,512	23,046	12,259	16,189	11,102	2,771	1,086	3,228	103,276	283	395	549
340	5/8"	5,024	3,840	3,851	5,361	13,566	21,728	12,152	26,418	18,919	14,154	2,410	1,959	129,382	354	392	544
359	5/8"	744	1,123	1,638	463	13,999	15,621	12,120	39,192	10,616	349	777	137	96,779	265	391	543
378	3/4"	5,299	4,790	5,032	4,218	7,425	10,119	11,956	15,541	6,743	4,475	4,765	3,041	83,404	229	386	536
454	5/8"	12,752	11,293	7,425	2,084	3,044	11,922	11,838	13,914	5,362	1,797	748	4,556	86,735	238	382	530
868	3/4"	943	0	79	175	4,800	19,886	11,422	9,529	7,252	2,113	10	316	56,525	155	368	512
731	1"	2,535	1,269	1,597	1,645	18,676	18,268	11,293	39,828	23,818	1,536	1,435	1,677	123,577	339	364	506
771	3/4"	4,742	3,118	3,408	4,484	46,162	22,373	11,274	41,510	3,845	2,737	2,320	7,406	153,379	420	364	505
10	5/8"	4,833	3,364	2,355	7,955	14,191	15,323	11,247	14,386	16,204	3,243	7,865	7,522	108,488	297	363	504
487	5/8"	11,331	9,585	4,856	9,916	10,624	51,316	11,238	40,780	22,693	6,036	6,625	4,656	189,656	520	363	503
456	3/4"	3,735	2,626	1,837	2,559	11,420	16,027	10,848	25,182	17,970	8,815	1,721	3,518	106,258	291	350	486
851	3/4"	441	808	742	70	1,885	13,493	10,798	12,336	14,890	6,676	1,587	3,164	66,890	183	348	484
464	5/8"	6,515	4,023	4,002	3,571	12,278	21,592	10,773	26,969	15,250	4,774	2,245	4,191	116,183	318	348	483
438-001	5/8"	1,954	547	925	2,555	38,725	21,354	10,497	20,880	589	3,418	3,651	3,940	109,035	299	339	470
425	5/8"	3,841	1,572	4,303	1,077	5,557	9,842	10,437	14,806	2,031	0	474	2,630	56,570	155	337	468
424	5/8"	no reading		49,697	10,103	11,491	10,176	10,423	20,505	13,099	8,974	9,595	11,700	155,763	427	336	467
396	5/8"	8,449	6,121	5,987	4,944	6,467	11,053	10,382	15,583	10,662	4,940	1,970	3,261	89,819	246	335	465
491	5/8"	5,263	4,515	3,829	3,630	3,003	16,149	10,159	20,448	17,550	4,658	3,383	4,819	97,406	267	328	455
327	5/8"	4,592	5,129	4,179	3,871	8,221	7,224	10,111	5,041	6,377	4,300	4,714	4,653	68,412	187	326	453
476	5/8"	4,144	5,256	2,970	3,563	4,205	13,872	10,086	23,715	12,819	4,582	4,972	4,109	94,293	258	325	452
474	5/8"	8,038	6,246	6,350	6,209	6,292	11,735	10,057	20,000	9,078	5,221	6,372	6,472	102,070	280	324	451
336	5/8"	2,412	1,142	4,889	2,779	5,809	6,332	9,925	5,281	1,200	351	651	1,438	42,209	116	320	445
423	5/8"	9,260	3,748	4,903	5,004	5,184	5,762	9,437	8,060	4,917	2,357	3,551	7,049	69,232	190	304	423
1152	3/4"						4,159	9,351	14,912	4,922	18,672	1,515	636	54,167	148	302	419
433	5/8"	2,885	4,819	3,880	2,679	2,701	13,009	9,308	29,683	11,697	3,397	3,593	4,925	92,576	254	300	417
346	5/8"	3,380	2,816	2,734	3,147	4,258	13,633	9,105	10,317	5,609	3,381	2,979	2,680	64,039	175	294	408
848	3/4"	2,574	2	0	0	6,013	8,280	9,063	10,988	10,629	1,005	2,145	869	51,568	141	292	406
471	5/8"	5,421	5,181	5,730	5,215	6,922	9,662	9,050	11,106	9,818	5,575	6,731	9,121	89,532	245	292	405
20	1"	9,941	6,567	8,565	11,540	1,889	3,823	9,028	6,318	6,036	5,831	4,527	8,654	82,719	227	291	404
358	5/8"	3,458	4,633	3,184	4,199	4,738	6,524	9,007	17,330	18,148	17,823	5,728	4,358	99,130	272	291	404
469	5/8"	2,308	1,927	2,065	4,296	10,099	11,811	8,355	23,716	12,696	3,108	1,804	2,285	84,470	231	270	374
347	3/4"	65,652	789	775	2,263	2,580	4,171	8,009	16,981	9,684	5,025	1,220	2,962	120,111	329	258	359
478	5/8"	10,561	5,739	6,918	1,373	1,091	4,700	7,880	1,159	2,561	663	2,961	10,617	56,223	154	254	353
498	5/8"	7,098	6,301	5,877	7,531	7,967	9,799	7,641	13,673	7,350	6,142	6,468	6,136	91,983	252	246	342
404	5/8"	2,076	1,600	1,359	1,888	3,394	5,478	7,288	10,381	5,432	1,888	1,670	1,721	44,175	121	235	327
435	5/8"	2,625	2,741	960	1,261	25,972	6,113	7,140	7,124	6,581	1,715	2,285	2,557	67,074	184	230	320
452	5/8"	14,043	11,605	10,586	10,666	9,197	8,329	6,992	11,991	13,999	7,010	7,319	9,562	121,299	332	226	313
413	5/8"	5,201	4,275	3,941	4,810	5,147	6,020	6,862	42,875	17,315	5,267	4,034	6,006	111,753	306	221	307
328	5/8"	2,645	2,863	2,318	5,302	3,883	4,119	6,826	2,445	2,966	2,284	2,219	2,593	40,463	111	220	306
362	5/8"	3,125	5,444	5,672	5,760	6,642	8,541	6,763	9,065	6,613	4,627	4,994	5,310	72,556	199	218	303
483	5/8"	12,907	9,405	7,789	6,344	6,048	6,069	6,397	18,170	12,756	9,443	10,109	9,727	115,164	316	206	287
343	5/8"	3,180	1,853	2,109	468	409	447	6,307	8,167	452	67	2,886	6,489	32,834	90	203	283
406	5/8"	5,076	3,196	2,998	4,713	2,853	6,533	6,279	8,564	2,707	1,736	1,431	2,626	48,712	133	203	281
489	5/8"	7,746	9,246	7,139	8,762	7,011	8,418	6,198	8,891	6,013	4,766	6,373	5,591	86,154	236	200	278
385	5/8"	9,510	10,032	10,024	9,281	8,814	6,916	6,197	10,813	5,712	8,037	7,732	5,214	98,282	269	200	278
397	5/8"	14,000	1,393	1,184	843	1,017	1,642	6,167	9,210	7,238	414	1,006	1,839	45,953	126	199	276
373	5/8"	4,328	3,453	3,835	4,446	3,055	6,444	6,065	13,415	4,987	4,202	3,301	1,438	58,969	162	196	272
415	5/8"	5,845	4,794	4,235	6,368	5,908	6,767	5,990	9,965	6,656	7,278	6,227	5,049	75,082	206	193	268
398	3/4"	2,682	2,647	2,511	2,591	4,423	5,338	5,925	9,844	3,932	2,133	2,188	3,732	47,946	131	191	265
480	5/8"	7,200	10,558	6,239	1,523	8,172	8,423	5,686	4,654	9,721	8,779	4,951	4,333	80,239	220	183	255
442	5/8"	2,147	690	573	859	966	24	5,683	3,464	19	19	752	17	15,213	42	183	255
1122	1"	910	575	598	706	1,749	1,715	5,651	6,977	1,047	1,000	2,454	1,959	25,341	69	182	253

Customer #	Meter Size	Jan	Feb	Mar	Apr	May	June	July	Aug	Sept	Oct	Nov	Dec	Total	Annual Demand gpd/connection	July Demand (maximum month) gpd/connection	July MDD gpd
181	5/8"	8,335	6,065	6,923	11,030	6,326	3,543	5,388	9,143	6,713	166	48	0	63,680	174	174	241
349	3/4"	753	724	1,378	1,049	801	2,212	5,387	5,179	4,864	1,844	1,596	1,716	27,503	75	174	241
337	5/8"	1,490	664	60	1,086	3,341	8,323	5,386	13,912	18,864	9,062	6,857	7,311	76,356	209	174	241
461	5/8"	6,141	4,785	4,523	4,888	8,791	7,025	5,205	13,453	5,353	4,838	3,892	4,796	73,690	202	168	233
422	5/8"	677	1,409	820	484	0	0	5,133	14,892	6,211	1,450	279	5,964	37,319	102	166	230
356	5/8"	5,664	3,667	2,473	1,182	2,332	4,080	5,121	18,125	11,456	4,940	1,913	2,656	63,609	174	165	229
342	5/8"	2,367	1,676	2,716	2,493	2,545	2,380	5,057	1,800	1,637	2,238	3,685	2,417	31,011	85	163	227
728	3/4"	3,823	3,647	3,056	2,786	2,183	3,003	5,045	7,049	2,762	2,565	2,897	3,041	41,857	115	163	226
876	3/4"	1,792	1,008	1,360	11	44	3,758	4,919	4,771	3,263	0	0	3,260	24,186	66	159	220
1125	3/4"	1,253	2,356	3,736	3,247	3,449	6,951	4,879	6,942	3,634	2,473	2,008	1,909	42,837	117	157	219
382	5/8"	897	2,203	558	1,560	860	1,435	4,821	3,559	1,504	1,352	818	2,312	21,879	60	156	216
326	1"	16,945	5,646	2,510	2,751	4,438	5,163	4,798	8,629	4,669	5,026	2,958	4,027	67,560	185	155	215
1124	3/4"	16	484	723	3,828	2,100	3,630	4,758	6,135	5,222	5,455	4,737	5,833	42,921	118	153	213
1150A	5/8"	3,187	1,391	3,987	355	81	5,168	4,659	10,375	855	354	476	4,214	35,102	96	150	209
366	5/8"	2,878	2,422	2,632	3,129	4,448	3,171	4,483	5,125	3,997	6,400	4,881	5,778	49,344	135	145	201
467	5/8"	541	0	167	123	1,394	2,332	4,366	11,677	6,086	1,109	148	984	28,927	79	141	196
492	5/8"	4,518	3,733	4,244	4,137	4,643	5,045	4,309	7,825	4,539	3,082	3,789	3,073	52,937	145	139	193
924	5/8"	442	988	1,504	2	3,403	205	4,189	13,738			313	781	25,565	70	135	188
473	5/8"	204	941	1,079	137	2,843	6,050	4,173	11,058	6,084	2,788	57	165	35,579	97	135	187
381	5/8"	2,842	1,381	2,235	261	1,228	786	4,034	578	2,178	280	550	1,203	17,556	48	130	181
97	5/8"	2,641	2,365	2,390	2,508	6,652	4,394	4,016	3,554	1,869	1,261	1,252	3,421	36,323	100	130	180
405	5/8"	6,480	4,210	10,789	4,627	4,108	4,134	3,928	4,861	4,429	5,065	5,358	6,737	64,726	177	127	176
393	5/8"	5,260	3,499	2,067	3,502	4,398	4,251	3,236	6,555	4,110	3,916	6,320	3,943	51,057	140	104	145
850	3/4"	733	12	238	131	1,374	1,480	2,921	10,183	680	408	158	802	19,120	52	94	131
472	5/8"	1,083	3,250	5,847	3,766	2,405	3,380	2,916	2,195	1,540	1,193	351	4,631	32,557	89	94	131
428	5/8"	3,129	4,263	597	13,739	5,969	0	2,878	390	1,866	108	18	1,320	34,277	94	93	129
333	5/8"	1,236	300	1,944	1,181	0	1,380	2,859	2,735	1,345	0	144	399	13,523	37	92	128
354	5/8"	4,426	3,556	3,787	3,046	3,861	3,250	2,796	4,454	2,823	3,045	2,991	3,474	41,509	114	90	125
479	5/8"	4,718	3,819	2,109	1,314	826	0	2,720	1,400	119	305	8,546	9,666	35,542	97	88	122
503	5/8"	1,496	2,000	997	1,364	0	0	2,679	4,719	996	205	418	2,141	17,015	47	86	120
453	5/8"	7,697	7,048	1,335	3,994	263	476	2,664	3,291	1,291	588	73	4,945	33,665	92	86	119
426	5/8"	6,405	5,577	5,073	4,421	1,533	1,405	2,649	5,177	3	504	153	2,884	35,784	98	85	119
409	5/8"	4,038	3,614	4,128	4,011	4,443	1,714	2,597	10,794	4,655	3,395	2,700	4,574	50,663	139	84	116
363	5/8"	1,169	466	411	1,121	0	620	2,587	507	1,379	1	0	1,040	9,301	25	83	116
503	5/8"	6,010	4,350	4,884	5,133	4,178	4,367	2,536	6,172	3,887	3,353	2,911	4,802	52,583	144	82	114
21	3/4"	2,109	51	355	391	1,021	2,052	2,514	3,481	1,770	2,397	6,048	3,683	25,872	71	81	113
370	5/8"	2,542	2,683	3,025	2,605	291	121	2,461	189	952	0	262	1,030	16,161	44	79	110
496	5/8"	6,955	4,756	6,100	3,945	2,157	4,587	2,305	10,752	29,430	6,758	4,693	5,090	87,528	240	74	103
16	3/4"	1,257	5,492	8,498	6,251	3,767	2,534	2,263	101	0	0	0	4,179	34,342	94	73	101
11	5/8"	1,800	2,216	2,089	1,231	965	1,894	2,106	4,271	1,148	572	5,580	2,141	26,013	71	68	94
338	5/8"	4,065	2,125	2,326	2,019	7,870	3,084	2,079	21,557	2,850	472	4,188	5,045	57,680	158	67	93
501	5/8"	7,913	3,275	1,755	4,259	3,230	1,815	2,061	3,048	1,423	4,038	1,876	3,381	38,074	104	66	92
420	5/8"	2	1,338	487	488	50	1	2,032	1,276	523	518	426	425	7,566	21	66	91
449	5/8"	3,420	2,920	2,760	2,873	2,871	2,432	2,021	1,246	3,076	2,431	3,815	2,670	32,535	89	65	91
106	1"	3,730	3,712	3,056	4,126	1,655	2,261	2,003	7,032	3,171	3,412	1,055	5,118	40,331	110	65	90
399	5/8"	4,285	3,750	3,422	3,364	1,813	1,011	1,968	1,907	2,164	1,429	709	828	26,650	73	63	88
324	3/4"	286,342	227	2,459	348	312	542	1,950	67,682	43,498	5,682	59	1,797	410,898	1,126	63	87
427	5/8"	5,062	3,682	3,196	3,320	2,503	2,317	1,835	2,217	1,669	1,350	982	4,628	32,761	90	59	82
869	5/8"	9,563	2,021	3,348	3,026	110	222	1,783	450	71	104	85	1,348	22,131	61	58	80
345	5/8"	1,658	778	172	310	0	20	1,773	1,373	16	0	2	180	6,282	17	57	79
389	5/8"	1,549	2,624	3,463	304	274	749	1,764	2,721	1,118	905	749	3,055	19,275	53	57	79
470	5/8"	3,970	6,467	4,971	4,017	4,095	4,461	1,728	7,636	7,093	2,954	4,641	5,044	57,077	156	56	77
936	5/8"	2,775	2,322	2,008	5,616	4,300	6,832	1,691	4,265	3,023	3,085	3,672	3,104	42,693	117	55	76
1078	3/4"		1,702		1,353	58	108	1,678	39,002	37,568	35,374	3,761	1,663	122,267	335	54	75
932	3/4"	3,753	2,111	1,088	1,569	1,572	1,506	1,644	7,096	5,731	385	468	4,629	31,552	86	53	74
357	5/8"	457	0	641	1,197	4,361	533	1,625	2,771	1,508	495	813	0	14,401	39	52	73
809	1"	2,486	3,512	15,556	403	1,522	1,146	1,479	3,217	4,707	1,131	381	854	36,394	100	48	66
376	5/8"	1,225	1,747	1,112	240	1,005	229	1,457	22,025	18,070	5,996	1,853	800	55,759	153	47	65
266	5/8"	0	0	0	1,030	1,568	541	1,421	2,580	3,445	1,477	1,998	1,809	15,869	43	46	64
1150C	5/8"						1,180	1,380	38,709	15,228	11,034	3,414	2,004	72,949	200	45	62
344	5/8"	2,904	1,591	2,122	2,131	516	952	1,328	1,879	1,385	1,374	1,337	2,360	19,879	54	43	59
490	5/8"	794	525	2,011	0	0	162	1,247	1,127	0	0	428	958	7,252	20	40	56
1153	3/4"						0	1,240	1,085	0	0	0	0	2,325	6	40	56
763	5/8"	790	918	1,085	522	341	163	1,231	2,046	201	630	1,515	871	10,313	28	40	55

Customer #	Meter Size	Jan	Feb	Mar	Apr	May	June	July	Aug	Sept	Oct	Nov	Dec	Total	Annual Demand gpd/connection	July Demand (maximum month) gpd/connection	July MDD gpd
390	5/8"	4,307	1,827	1,675	1,961	2,825	921	1,100	1,990	9,773	5,468	10,955	7,628	50,430	138	35	49
15	5/8"	2	11,655	632	1,394	0	6	1,008	3,387	84	0	10	1,837	20,015	55	33	45
414	5/8"	1,080	836	997	17	311	972	888	1,562	1,178	1,349	1,086	956	11,232	31	29	40
369	5/8"	3,874	3,148	4,449	5,227	2,182	754	849	202	89	116	2,584	2,490	25,964	71	27	38
317	5/8"	1,260	241	772	430	300	0	845	no read	721	41	94	784	5,488	15	27	38
417	5/8"	1,040	7,253	450	0	672	0	832	785	177	0	0	0	11,209	31	27	37
432	5/8"	1,887	1,483	215	771	0	0	731	816	303	159	1,062	561	7,988	22	24	33
364	5/8"	2,995	4,427	16,898	803	0	71	695	2,651	1,060	7	1,303	1,343	32,253	88	22	31
325	3/4"	4,504	3,011	1,809	1,671	8,290	48,858	643	46,205	32,441	29,998	1,607	3,049	182,086	499	21	29
921	3/4"	269	559	848	5,250	2,188	607	617	2,181	2,924	1,980	1,746	0	19,169	53	20	28
339	5/8"	2,221	1,760	1,997	2,614	307	63	573	310	701	508	0	0	11,054	30	18	26
403	5/8"	1,171	2,867	741	1,492	1,088	253	446	2,488	1,246	35	179	768	12,774	35	14	20
17	5/8"	2,683	2,359	2,245	245	582	155	445	2,469	833	3,063	3,651	2,950	21,680	59	14	20
1121	3/4"	818	839	947	1,742	263	130	445	35	30	32	32	59	5,372	15	14	20
895	1"	4,723	2,971	848	1,212	405	32	411	4,798	979	1,136	4,971	10,812	33,298	91	13	18
410	5/8"	1,597	0	0	0	0	0	362	469	462	701	53	0	3,644	10	12	16
446	5/8"	184	206	188	63	216	101	357	127	151	319	177	98	2,187	6	12	16
477	5/8"	5,562	8,606	824	58	3	89	296	127	668	244	88	4,837	21,402	59	10	13
457	5/8"	5,049	1,067	331	0	406	279	252	40	431	0	216	5,396	13,467	37	8	11
928	3/4"	1,940	338	892	205	418	137	252	312	20	1,650	1,958	2,027	10,149	28	8	11
419	5/8"	588	256	0	134	61	83	213	763	412	0	220	170	2,900	8	7	10
875	5/8"	7,296	3,682	9,075	1,125	288	293	187	11,374	606	268	0	1,630	35,824	98	6	8
367	5/8"	10,709	1,530	418	808	103	279	182	851	2,397	172	1,523	443	19,415	53	6	8
448	5/8"	1,002	243	449	52	4	166	150	172	66	10	4,545	2,401	9,260	25	5	7
400	5/8"	840	723	583	233	60	11	127	3	1	0	117	579	3,277	9	4	6
445	5/8"	1,705	2,338	7,864	62	0	187	125	1	238	109	0	3,687	16,316	45	4	6
14	3/4"	1,372	1,025	1,927	758	108	1	99	3,145	3,870	729	1,284	1,547	15,865	43	3	4
322	3/4"	12,319	8,916	7,609	99	8	223	89	182	69	189	274	760	30,737	84	3	4
885	1"	1,449	240	796	22	415	2,259	73	98	4,235	21	31	14,678	24,317	67	2	3
450	5/8"	688	1,155	1,251	20	5	179	33	147	238	8	10	203	3,937	11	1	1
451	5/8"	3,032	1,387	240	174	643	549	29	1,590	0	0	0	381	8,025	22	1	1
407	5/8"	2,949	1,676	1,114	757	74	10	5	1,124	1,331	19	38	1,003	10,100	28	0	0
411	5/8"	5,637	4,157	4,003	4,166	4,065	117	4	4	0	15	12	7	22,187	61	0	0
500	5/8"	5,221	159	2,330	1,444	389	7,306	2	25,746	1,957	2	8	4,256	48,820	134	0	0
443	5/8"	59,399	1,252	613	0	761	439	1	1,608	385	283	867	2,280	67,888	186	0	0
361	5/8"	2,604	26,393	4,622	1,756	94	0	1	10,493	5,401	564	403	2,198	54,529	149	0	0
495	5/8"	379	418	810	240	2,554	188	1	4,227	156	349	1,119	785	11,226	31	0	0
1027	1" Jly	5,073	4,344	4,163	3,012	21,751	33,542	0	41,444	33,037	to 1" meter			146,366	401	0	0
1155	3/4"						1,334	0	4,351	1,353	121	285	1	7,445	20	0	0
1157	3/4"								3,798	1,380	510	326	0	6,014	16	0	0
380	3/4"	522	784	1,784	1,492	0	0	0	1	374	61	0	444	5,462	15	0	0
1027	1"										1,731	680	1,085	3,496	10	0	0
18	5/8"	266	502	178	0	0	0	0	1,615	300	14	0	0	2,875	8	0	0
494	5/8"	705	290	29	42	34	0	0	311	0	1	60	435	1,907	5	0	0
1160	1"	0	0	0	0	0	523	0	0	0	523	285	0	1,331	4	0	0
12	5/8"	0	0	0	0	0	0	0	2	0	0	0	0	2	0.005	0	0
712	3/4"	0	0	0	0	0	0	0	2	0	0	0	0	2	0.005	0	0
															317	625	

Customer #	Meter Size	Jan	Feb	Mar	Apr	May	June	July	Aug	Sept	Oct	Nov	Dec	Total	Annual Demand gpd/connection	July Demand (maximum month) gpd/connection	July MDD gpd
<b>Multiple Units</b>																	
738	3/4"	1662	2132	3033	0	47786	158979	386033	65087	53554	6215	1708	1991	728,180	1,995	12,453	17,296
		13656	1323	625	1370	34871	77692	83631	109406	84721	15681	557	592	424,125	1,162	2,698	3,747
	5/8"	12614	76	81	79	29891	41056	69077	58180	50465	10723	45	33	272,320	746	2,228	3,095
481	5/8"	15410	12716	13504	8044	5260	4388	61390	114323	5551	4944	5671	6029	257,230	705	1,980	2,750
351	5/8"	12047	9466	8622	13097	46263	48592	60212	57979	44250	9489	8445	11477	329,939	904	1,942	2,698
1051	3/4"	2385	355	407	1442	40914	35374	53019	78300	44834	18751	209	1636	277,626	761	1,710	2,375
452	5/8"	10303	8809	7978	9438	20531	29738	32615	17767	34494	9421	10072	8719	199,885	548	1,052	1,461
316	5/8"	6548	7033	15547	3363	19908	21483	27392	22710	14580	4796	4395	5226	152,981	419	884	1,227
447	1"	15129	13393	17444	17183	14087	14620	21482	23207	18402	11958	14230	17780	198,915	545	693	962
383	5/8"	3009	2641	2387	2608	6808	5835	18273	15936	7240	3314	3054	2495	73,600	202	589	819
194	5/8"	14006	11710	12412	12639	13215	19062	16462	29429	11599	10937	11849	11194	174,514	478	531	738
324	5/8"	1042	1247	544	1291	4980	36636	14554	51226	34256	4958	512	559	151,805	416	469	652
13	5/8"	23926	5337	3350	4399	1436	12576	14045	22831	13898	10635	7521	4864	124,818	342	453	629
884	3/4"	740	2972	1339	6214	6759	10394	13454	15788	9893	3926	3205	4026	78,710	216	434	603
7	5/8"	43417	29854	25652	12265	11227	11789	13011	12404	13786	15665	15546	23146	227,762	624	420	583
393	5/8"	3915	3352	2486	3152	14603	19877	12539	24632	18078	3361	1837	3483	111,315	305	404	562
488	5/8"	8850	5800	5566	5661	8991	18975	8034	29854	16228	5905	6844	7127	127,835	350	259	360
482	5/8"	7295	6733	5011	5011	3468	3771	7752	12961	4081	3561	4768	5592	70,004	192	250	347
466	3/4"	6494	6523	6929	6896	6759	4009	6379	10056	7201	7186	6814	8338	83,584	229	206	286
377	3/4"	6304	7091	6163	6113	4867	8450	4833	5551	4225	3622	5197	4399	66,815	183	156	217
368	5/8"	10617	10116	7966	8885	5707	5718	4824	9986	6670	12621	3483	1854	88,447	242	156	216
465	5/8"	7604	5684	5294	4736	5338	4373	4591	7201	3610	3530	4640	8352	64,953	178	148	206
3	5/8"	9685	7946	16994	6166	110923	3700	3786	6999	5468	4863	4732	7003	188,265	516	122	170
19	5/8"	6904	5327	2963	3097	3255	3339	3368	4601	4139	4370	3669	4057	49,089	134	109	151
388	5/8"	7392	3309	2780	3997	2072	2428	3193	5052	2977	2398	2472	4311	42,381	116	103	143
5	5/8"	3039	1887	1673	1740	2807	1765	2879	3200	1575	1920	1634	6363	30,482	84	93	129
4	5/8"	12116	11837	16489	15336	9588	9036	2655	9644	5361	3805	10896	10028	116,791	320	86	119
355	5/8"	5276	3894	3411	3205	2528	3474	2515	4418	4528	4804	4057	4842	46,952	129	81	113
462	5/8"	5187	3149	2848	3047	2653	3653	1925	14009	2346	2596	3117	2415	46,945	129	62	86
486	5/8"	3542	1019	1234	2238	1887	1869	1496	2042	1918	2870	3244	3074	26,433	72	48	67
9	5/8"	17446	10406	6060	2888	2033	2088	1173	1597	1217	908	5751	7689	59,256	162	38	53
341	5/8"	4664	3824	3713	4188	1491	1241	706	5106	2393	2156	2234	3443	35,159	96	23	32
919	5/8"	134131	1198	263	548	230	185	191	326	528	189	1621	366	139,776	383	6	9
493	5/8"	0	0	0	0	0	0	0	1	0	0	0	155	156	0	0	0
															<b>408</b>	<b>908</b>	<b>1,262</b>

**APPENDIX B**  
Metered/Production Data by Month  
2001-2007

**2001**

	<b>Commercial</b>	<b>Residential</b>	<b>Total</b>	<b>% Total Demand per Month</b>	<b>Monthly Production</b>	<b>% Total Production per Month</b>
January	4,564,939	2,648,779	<b>7,213,718</b>	6%	8,280,000	6%
February	4,464,991	2,102,095	<b>6,567,086</b>	5%	8,176,000	6%
March	6,092,903	2,382,463	<b>8,475,366</b>	7%	8,175,000	6%
April	3,975,383	1,872,451	<b>5,847,834</b>	5%	6,517,100	5%
May	5,494,268	4,122,304	<b>9,616,572</b>	8%	12,133,300	8%
June	8,844,854	9,569,414	<b>18,414,268</b>	15%	17,837,000	12%
July	8,109,815	6,971,830	<b>15,081,645</b>	12%	21,093,000	15%
August	11,139,377	7,879,608	<b>19,018,985</b>	15%	21,638,000	15%
September	6,794,520	6,703,072	<b>13,497,592</b>	11%	15,667,000	11%
October	5,284,983	6,468,619	<b>11,753,602</b>	9%	11,402,000	8%
November	2,318,121	1,609,170	<b>3,927,291</b>	3%	4,793,000	3%
December	2,996,275	2,426,199	<b>5,422,474</b>	4%	8,042,000	6%
<b>TOTAL</b>	<b>70,080,429</b>	<b>54,756,004</b>	<b>124,836,433</b>		<b>143,753,400</b>	

**2002**

	<b>Commercial</b>	<b>Residential</b>	<b>Total</b>	<b>% Total Demand per Month</b>	<b>Monthly Production</b>	<b>% Total Production per Month</b>
January	6,266,389	2,800,298	<b>9,066,687</b>	7%	7,743,000	5%
February	5,165,089	2,707,210	<b>7,872,299</b>	6%	15,510,000	11%
March	5,515,733	1,224,604	<b>6,740,337</b>	5%	8,274,000	6%
April	4,557,331	2,028,740	<b>6,586,071</b>	5%	6,002,000	4%
May	4,558,670	3,002,113	<b>7,560,783</b>	6%	9,649,000	7%
June	7,058,057	5,920,259	<b>12,978,316</b>	10%	16,748,000	11%
July	9,841,172	9,021,891	<b>18,863,063</b>	15%	21,095,200	14%
August	11,279,408	8,470,194	<b>19,749,602</b>	16%	21,747,000	15%
September	7,435,242	7,311,536	<b>14,746,778</b>	12%	16,861,000	11%
October	4,845,615	4,468,315	<b>9,313,930</b>	8%	10,287,300	7%
November	2,899,783	1,485,517	<b>4,385,300</b>	4%	4,862,000	3%
December	4,090,253	2,150,930	<b>6,241,183</b>	5%	7,898,100	5%
<b>TOTAL</b>	<b>73,512,742</b>	<b>50,591,607</b>	<b>124,104,349</b>		<b>146,676,600</b>	

**2003**

	<b>Commercial</b>	<b>Residential</b>	<b>Total</b>	<b>% Total Demand per Month</b>	<b>Monthly Production</b>	<b>% Total Production per Month</b>
January	5,462,860	2,171,018	<b>7,633,878</b>	6%	7,859,900	6%
February	5,386,908	2,677,746	<b>8,064,654</b>	6%	8,789,900	6%
March	5,538,611	1,958,772	<b>7,497,383</b>	6%	7,946,100	6%
April	4,214,959	1,725,709	<b>5,940,668</b>	5%	6,707,900	5%
May	4,399,065	2,516,731	<b>6,915,796</b>	5%	8,849,300	6%
June	8,845,269	8,173,903	<b>17,019,172</b>	13%	18,467,600	13%
July	10,038,985	8,671,399	<b>18,710,384</b>	14%	20,731,500	15%
August	8,900,558	8,423,485	<b>17,324,043</b>	13%	19,469,200	14%
September	8,014,389	7,386,095	<b>15,400,484</b>	12%	16,335,400	12%
October	7,028,969	4,732,087	<b>11,761,056</b>	9%	11,798,500	8%
November	3,925,531	1,943,606	<b>5,869,137</b>	5%	6,169,600	4%
December	5,072,851	2,199,136	<b>7,271,987</b>	6%	8,317,000	6%
<b>TOTAL</b>	<b>76,828,955</b>	<b>52,579,687</b>	<b>129,408,642</b>		<b>141,441,900</b>	

**2004**

	<b>Commercial</b>	<b>Residential</b>	<b>Total</b>	<b>% Total Demand per Month</b>	<b>Monthly Production</b>	<b>% Total Production per Month</b>
January	6,077,356	2,557,348	<b>8,634,704</b>	7%	9,056,600	6%
February	6,351,320	2,948,448	<b>9,299,768</b>	7%	8,507,000	6%
March	6,180,134	2,537,548	<b>8,717,682</b>	7%	8,502,500	6%
April	4,004,563	2,593,032	<b>6,597,595</b>	5%	7,121,000	5%
May	5,543,235	5,761,692	<b>11,304,927</b>	9%	12,433,700	9%
June	7,561,111	6,830,118	<b>14,391,229</b>	11%	16,744,400	12%
July	9,480,574	7,349,467	<b>16,830,041</b>	13%	19,928,100	14%
August	10,184,792	8,187,567	<b>18,372,359</b>	14%	20,145,600	14%
September	7,863,045	6,930,186	<b>14,793,231</b>	11%	16,037,100	11%
October	4,641,015	3,186,022	<b>7,827,037</b>	6%	9,293,000	7%
November	3,430,439	1,305,265	<b>4,735,704</b>	4%	5,144,100	4%
December	5,360,698	1,993,836	<b>7,354,534</b>	6%	8,378,000	6%
<b>TOTAL</b>	<b>76,678,282</b>	<b>52,180,529</b>	<b>128,858,811</b>		<b>141,291,100</b>	

**2005**

	<b>Commercial</b>	<b>Residential</b>	<b>Total</b>	<b>% Total Demand per Month</b>	<b>Monthly Production</b>	<b>% Total Production per Month</b>
January	4,864,862	4,882,807	<b>9,747,669</b>	8%	10,202,850	7%
February	4,499,383	4,267,894	<b>8,767,277</b>	7%	9,418,426	7%
March	4,699,631	4,174,984	<b>8,874,615</b>	7%	9,481,962	7%
April	2,861,469	2,860,589	<b>5,722,058</b>	5%	7,209,734	5%
May	2,707,814	3,033,423	<b>5,741,237</b>	5%	7,135,922	5%
June	5,295,984	8,215,736	<b>13,511,720</b>	11%	14,879,198	11%
July	7,540,036	11,618,932	<b>19,158,968</b>	15%	20,687,604	15%
August	6,534,558	12,051,230	<b>18,585,788</b>	15%	19,749,800	14%
September	4,954,385	8,890,125	<b>13,844,510</b>	11%	15,501,676	11%
October	3,797,675	4,982,774	<b>8,780,448</b>	7%	8,729,968	6%
November	2,337,907	2,984,460	<b>5,322,367</b>	4%	5,459,440	4%
December	3,798,234	4,028,643	<b>7,826,877</b>	6%	8,553,384	6%
<b>TOTAL</b>	<b>53,891,936</b>	<b>71,991,595</b>	<b>125,883,531</b>		<b>137,009,964</b>	

**2006**

	<b>Commercial</b>	<b>Residential</b>	<b>Total</b>	<b>% Total Demand per Month</b>	<b>Monthly Production</b>	<b>% Total Production per Month</b>
January	2,660,718	4,629,969	<b>7,290,687</b>	6%	9,235,204	7%
February	2,965,287	5,658,771	<b>8,624,057</b>	7%	8,782,956	6%
March	2,726,821	5,170,219	<b>7,897,040</b>	6%	8,490,320	6%
April	2,041,912	4,816,104	<b>6,858,016</b>	5%	8,463,120	6%
May	2,527,804	5,249,529	<b>7,777,333</b>	6%	8,572,932	6%
June	4,500,096	9,683,779	<b>14,183,874</b>	11%	16,195,384	11%
July	6,678,621	13,577,005	<b>20,255,625</b>	16%	21,848,288	15%
August	6,117,307	13,074,286	<b>19,191,593</b>	15%	20,434,388	14%
September	4,731,472	10,867,952	<b>15,599,424</b>	12%	16,327,328	12%
October	2,235,503	4,983,698	<b>7,219,201</b>	6%	8,520,668	6%
November	1,714,116	3,138,294	<b>4,852,410</b>	4%	5,341,812	4%
December	2,215,387	5,387,476	<b>7,602,862</b>	6%	8,846,196	6%
<b>TOTAL</b>	<b>41,115,042</b>	<b>86,237,080</b>	<b>127,352,122</b>		<b>141,058,596</b>	

## 2007

	Commercial	Residential	Total	% Total Demand per Month	Monthly Production	% Total Production per Month
January	3,547,318	7,346,641	<b>10,893,959</b>	9%	9,619,760	7%
February	2,972,003	5,395,422	<b>8,367,425</b>	7%	8,643,121	6%
March	2,710,017	5,289,223	<b>7,999,239</b>	6%	9,419,060	7%
April	2,024,777	4,284,130	<b>6,308,907</b>	5%	6,345,608	5%
May	3,446,423	6,467,535	<b>9,913,957</b>	8%	11,754,620	9%
June	4,496,147	9,680,978	<b>14,177,125</b>	11%	17,444,904	13%
July	4,666,069	12,652,999	<b>17,319,068</b>	14%	21,011,561	15%
August	6,628,419	14,448,754	<b>21,077,173</b>	17%	18,928,543	14%
September	4,026,034	9,607,608	<b>13,633,642</b>	11%	14,434,628	11%
October	2,064,206	4,028,800	<b>6,093,006</b>	5%	6,720,780	5%
November	1,414,410	2,741,636	<b>4,156,045</b>	3%	4,782,784	4%
December	1,925,425	4,314,755	<b>6,240,179</b>	5%	7,245,072	5%
<b>TOTAL</b>	<b>39,921,246</b>	<b>86,258,479</b>	<b>126,179,725</b>		<b>136,350,441</b>	